





A Group brand | **legrand**

©2013 Vantage™

All rights reserved.

1061 South 800 East, Orem, Utah 84097

(800) 555.9891, (801) 229.2800, Fax (801) 224.0355

[www.vantagecontrols.com](http://www.vantagecontrols.com)

[youtube.com/vantage](https://youtube.com/vantage)

[twitter/vantagecontrols](https://twitter/vantagecontrols)

[facebook.com/vantagecontrols](https://facebook.com/vantagecontrols)

Vantage™, Vantage Controls™ and Bticino™ are trademarks of Legrand/Legrand Home Systems Inc.

WebPoint™, WebPoint Lite™, InFusion™, InFusion Media™, and InFusion Design Center™ are trademarks of Vantage and Legrand/Legrand Home Systems Inc.

Microsoft™, Windows™ and Windows Vista™ are trademarks of Microsoft Corporation

HP, COMPAQ and HP Slate™ are trademarks of Microsoft Corporation

Apple®, iTunes®, iOS®, iPhone®, iPod® and iPad® are trademarks of Apple Inc.

Android™ is a trademark of Google Inc.

BlackBerry® is a trademark of Research In Motion, Ltd.\* (RIM®)

Home Photos Courtesy of:

©2013 Michael McRae • 801.328.3633 • [www.michaelmcrae.com](http://www.michaelmcrae.com)

Michael Weschler, Michael Weschler Photography

[Shutterstock.com](http://Shutterstock.com), pgs 6, 8, 26, 28, 30



# CONTENTS

|                          |   |
|--------------------------|---|
| INTRODUCTION             | < 1   |
| CENTRALIZED SYSTEM       | System Overview < 3<br>General Infrastructure < 5-8<br>User Interfaces < 9<br>Entertainment Solutions < 11-16<br>Mobile Access < 17<br>Comfort Solutions < 19 |
| DISTRIBUTED SYSTEM       | System Overview < 21<br>WireLink < 23<br>RadioLink < 25<br>Radio Frequency Lighting Control < 27  |
| HYBRID SYSTEM            | System Overview < 29  |
| COMMERCIAL SYSTEM        | System Overview < 31  |
| SOFTWARE and INTEGRATION | Design Center < 33<br>InFusion Media < 33<br>Partners < 35<br>Drivers/Driver Tools < 35   |
| PRODUCT REFERENCE        | Overview < 37<br>Table of Contents < 38<br>Product Reference < 39-71  |

# WELCOME TO VANTAGE

Built upon a 25-year legacy of innovation in the lighting control industry, the Vantage offering includes a full range of luxury solutions that meet the lighting, comfort, and entertainment needs of the modern automation and control system user. Designed to seamlessly combine aesthetics and technology, Vantage systems give unprecedented control over every facet of life in luxury living and work spaces – from extraordinary lighting scenes to effortless comfort controls to thrilling theater installations. By combining elegant, sophisticated user interfaces with industry-leading software, Vantage has truly become the premier automation solution for the luxury lifestyle.

Vantage systems are available in either a wired or wireless format. This creates the flexibility to include Vantage in new construction, expand a current Vantage system, or retrofit an existing luxury space to include Vantage.

This catalog describes the layout and specification of the various Vantage system options including Centralized, Distributed and Hybrid installations. It also outlines system solutions including user interfaces, distributed audio, distributed video, theater, comfort and energy management. The power of the Vantage system is that all solutions are possible regardless of the underlying system (wired, wireless or hybrid). In addition, this catalog includes individual products and key features that help to differentiate the Vantage system. You can also find detailed information about Vantage products and support tools online at:

[vantagecontrols.com](http://vantagecontrols.com)

[youtube.com/vantage](https://youtube.com/vantage)

[facebook.com/vantagecontrols](https://facebook.com/vantagecontrols)

Or, you can contact us at 1.801.229.2800 and we will put you in touch with a Vantage representative in your area.





## CENTRALIZED SYSTEM OVERVIEW

Typically installed in new construction projects, the Vantage Centralized Control and Automation System enables sophisticated control of the entire environment at the touch of a button. This system employs electrical enclosures to house Vantage dimmer or relay power modules. Typically located inside mechanical rooms or electrical closets, the enclosures connect directly to the electrical circuit breaker panels, enabling line-voltage control to dim and to switch electrical loads.

In support of the complete lighting system, this design eliminates the need for traditional electrical switches or dimmers placed throughout the living space to control individual lights and loads. Instead, system owners enjoy full system control from attractive and easy-to-use Vantage keypads and touchscreens. These user interfaces provide the maximum amount of control while minimizing wall clutter.

In addition to lighting, the Vantage Centralized System enables control of distributed audio and video, security, climate control, energy management, theater systems and more. The system is accessible from the Internet, through iOS or Android apps for tablets or smartphones, providing complete control of the home from any location.









# CENTRALIZED SYSTEM - INFUSION 110/220 VOLT

The Vantage Centralized 110/220\* Volt System is designed for use throughout North America, the Pacific, the Caribbean and other regions of the world that have adopted North American electrical standards. Components for this system are UL listed. The system adds practical elegance to any modern living space by providing complete, easy-to-use automation and control at the touch of a button. In addition, the Centralized System can be combined with a Distributed System for use in applications such as additions or renovations. More information on this type of “hybrid” system can be found on page 29.

## InFusion Controller

The InFusion™ Controller is one of the most powerful automation system controllers on the market. Based on Intel's Xscale® processor, the controller has superior acceleration and an expansive programming memory capacity to store and execute commands for delay-free control of simple or complex lighting and automation systems. The controller is specifically designed to offer fast and intuitive installation. The Ethernet connection supports full IP connectivity, while five RS-232 ports and up to two RS-485 ports provide enough device connections for initial installation and expansion later. Installers save time and money programming the controller with InFusion Design Center™, Vantage's upgradeable, user-friendly software.

## Enclosure

Typically installed in a mechanical room or electrical closet, the Vantage enclosure houses an InFusion Controller and up to four separate plug-and-play modules for quick and easy installations. A single main power enclosure (IMPE-4-IC24) can support up to 48 loads, while the addition of six secondary power enclosures can expand the system to control a total of 336 loads. At full capacity, a Vantage system combines 31 main power enclosures and 186 secondary enclosures, for a total of up to 10,416 wired loads.

## Standard Dimming Module

Modules are the high-voltage lighting and load control points for the centralized system. Each light or load in the system is “home-run” wired back to a module, which is installed in the Vantage enclosure. Each Standard Dimming Module controls up to 64 amps and 12 dimmable loads including LED, incandescent and fluorescent, magnetic low-voltage, electronic low-voltage, neon, cold cathode and variable speed motors. For approved LED luminaires please visit [www.vantagecontrols.com](http://www.vantagecontrols.com).

\*The system is rated up to 240 Volts with support up to 277 Volts in certain products.



InFusion Main Power Enclosure  
IMPE-4-IC24

- ◊ Designed for quick installation
- ◊ Plug-and-play module fittings
- ◊ Lockable quick-release latch
- ◊ 16-in (40.64 cm) o.c. recessed or surface mount - see page 56
- ◊ Custom fitted hinged door for recessed or surface installs
- ◊ Low-voltage wiring harness eliminates the need to wire between modules
- ◊ Opening in panel door for easy access to Controller
- ◊ 52" x 14.5" x 4" (32cm x 37cm x 10cm)



InFusion Controller  
IC-36-1

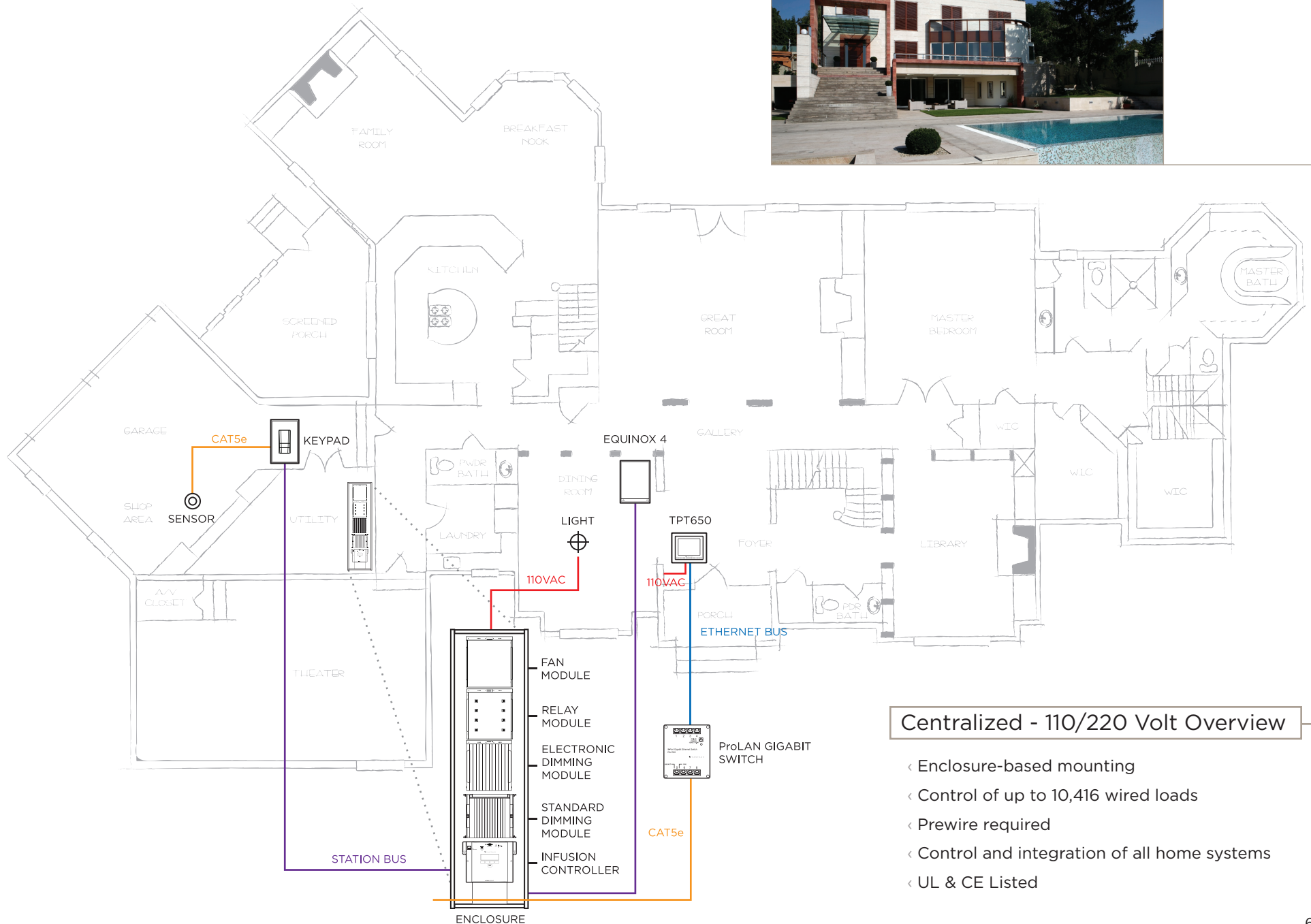
- ◊ Controllers easily networked for system expansion
- ◊ Ethernet connection supports full IP connectivity
- ◊ Five RS-232 ports provide easy device connectivity
- ◊ Intel Xscale® processor
- ◊ SD Card backup



Standard Dimming Module  
SDM12-EM

- ◊ Controls a wide variety of dimmable loads including LED
- ◊ 12-Load, 64 amp rated capacity
- ◊ Eliminates the need for field wiring to the module
- ◊ Can notify dealer or end user of problem by email
- ◊ Fuse protected line feeds
- ◊ Current sensing for energy management applications
- ◊ Support for AFCI breakers

## INFUSION 110/220 VOLT INFRASTRUCTURE



### Centralized - 110/220 Volt Overview

- ◁ Enclosure-based mounting
- ◁ Control of up to 10,416 wired loads
- ◁ Prewire required
- ◁ Control and integration of all home systems
- ◁ UL & CE Listed

# CENTRALIZED SYSTEM - INFUSION DIN

Topologically consistent with a 110/220 Volt system, the Centralized DIN (Deutsch Industrial Norm) System is typically, but not exclusively, used in new construction projects in areas of the world where the DIN standard has been adopted. Components for this system carry the CE mark. DIN references the mechanical fixing method for the dimmer, relay and input stations within an enclosure, the very same fixing method as used by circuit breakers, power supplies and other actuators controlling loads within the home. Extremely compact, enclosures are typically mounted locally to the main electrical supply in the home, simplifying the entire low-voltage electrical installation. Controlled via fully programmable keypad stations or touchscreens, the dimmer and relay modules typically regulate the AC load to the lighting connections. However any power source can be switched using this same methodology. As with the 110/220 volt system, DIN systems can be used in conjunction with radio (902 MHz) or remote wired dimmers to create a degree of distributed control throughout the home. Additions or remodeling can easily be integrated through this hybrid application (see page 29).

## InFusion Controller - DIN

The InFusion Controller-DIN, with its Intel XScale processor, is one of the most powerful controllers in its class. It features the capacity to connect up to 31 controllers, each allowing up to 120 stations, and creates an environment where lighting, HVAC, security and home A/V are integrated seamlessly. The controller is specifically designed to offer fast and intuitive installations. The Ethernet connection supports full IP connectivity, while five RS-232 ports and two RS-485 ports provide enough device connections for initial installation and expansion later. Installers save time and money programming the controller with InFusion Design Center, Vantage's upgradeable, user-friendly software.

## Legrand DIN Enclosure

Typically installed in a mechanical room or electrical closet, the Legrand DIN Enclosure provides the DIN rail mechanical fixings to house the InFusion Controller, dimmers, relays and low-voltage relay output stations.

## DIN Dimmers

To effectively dim from the traditional incandescent light fixture to the latest LED-based lighting solution, Vantage provides a range of modular four-channel dimmers. The new single channel Universal Load Dimmer can be switched between forward and reverse phase for ultimate specifier and system owner flexibility. It can also be electronically bridged for high output lighting circuits. Additional control interfaces can also be installed in the same DIN enclosure including relays, contact inputs and low voltage controls.



Legrand "Ready to use"  
DIN Enclosure

- ◊ 24 Modules per row
- ◊ Up to 6 rows per enclosure
- ◊ IP43 and fire rated to 750°C
- ◊ Sold by Legrand Group



InFusion Controller - DIN  
IC-DIN

- ◊ Controllers easily networked for system expansion
- ◊ Ethernet supports full IP connectivity
- ◊ RS232 - RS485 ports provide easy device connectivity
- ◊ Intel Xscale® processor
- ◊ SD Card backup

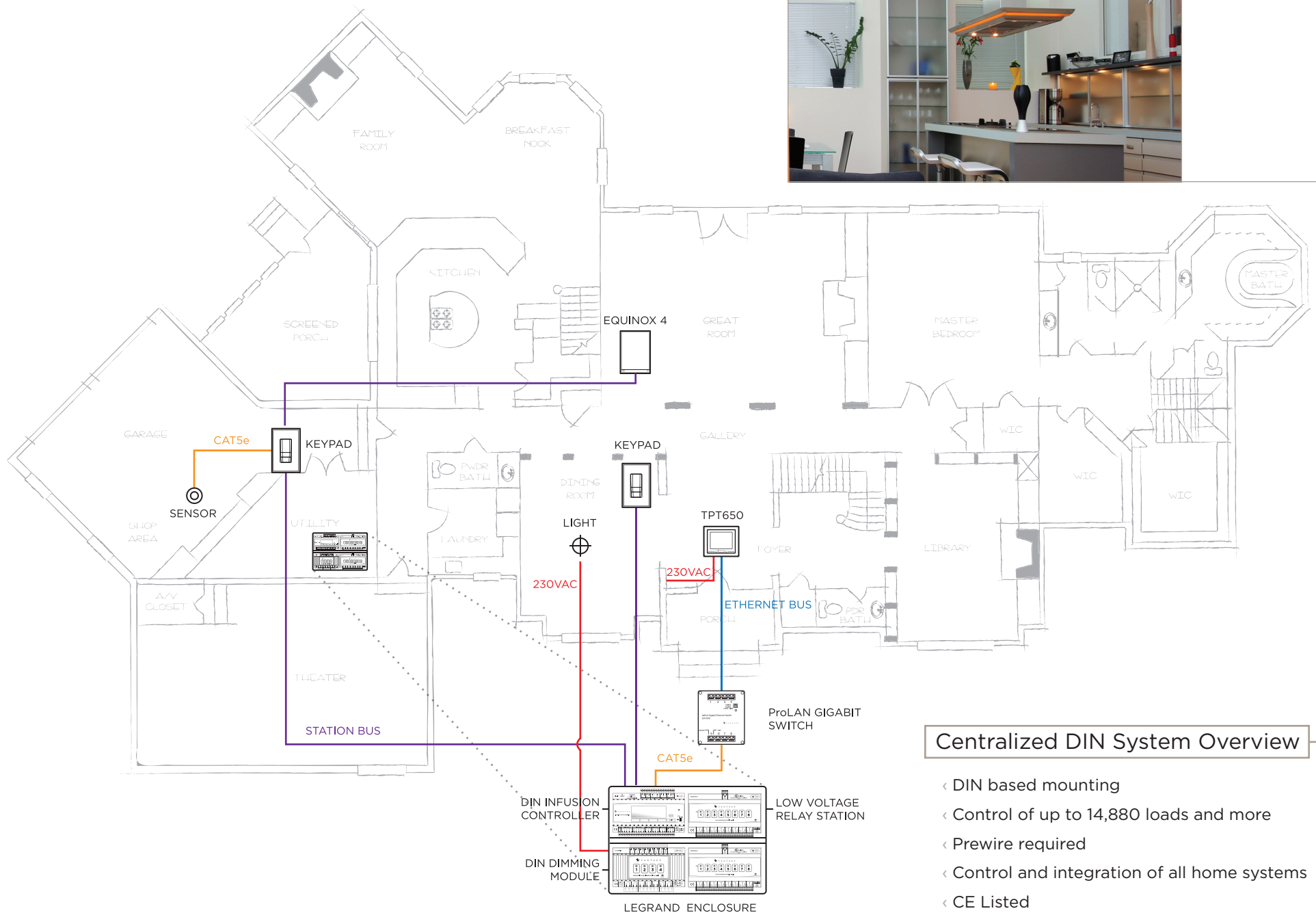


Universal Load Dimmer  
Station - DIN  
ULDS1-DIN

- ◊ 4 DIN module width (70mm) that clips easily on standard 35mm DIN rails
- ◊ Executes single or multiple events from single trigger
- ◊ Dims forward or reverse phase loads
- ◊ Acts as an independent dimmer
- ◊ Manual ON/OFF override
- ◊ Displays the operating status with LED indicators
- ◊ Communicates with the Controller through a two-wire bus



## DIN INFRASTRUCTURE



### Centralized DIN System Overview

- ◁ DIN based mounting
- ◁ Control of up to 14,880 loads and more
- ◁ Prewire required
- ◁ Control and integration of all home systems
- ◁ CE Listed

# USER INTERFACES

Interface to the Vantage system is provided by traditional and LCD keypads; touchscreens as well as web-enabled mobile devices and handheld remotes. Designed to enhance the décor of any luxury space, the user interface is both sophisticated and intuitive, allowing complete control of all systems, including lighting, climate control and audio/video.

## Equinox LCD Interfaces

The Equinox LCD Interfaces represent a bold, overarching initiative that will result in a unified signature physical and graphical aesthetic consistent across all control devices in a Vantage system. They represent the future of our design philosophy: ultimate simplicity, ultimate consistency and an end to the clutter and confusion that have defined home automation to this point. Equinox 4 marks the introduction of the Vantage Experience Solution, Equinox 7-UX (pictured right), a larger in-wall touchscreen will be available by the end of 2012.

## Touchscreens

Vantage touchscreens enhance a completely integrated Vantage system. Powered by Vantage's InFusion Media™ software, the touchscreens are available in a variety of sizes. For custom control, touchscreens can be personalized using the system's intuitive drag-and-drop programming with Design Center™ software.

## Keypads

Vantage Keypad Stations are the primary control points of a Vantage automation system. A single keypad can replace entire rows of standard lighting and low voltage switches with simple backlit buttons that add a sophisticated look to any room. The Vantage system offers unique features such as programmable LEDs that offer customized LED color selections and that dim or brighten based on time of day, custom engraving to enhance usability, and finishes that complement any interior design aesthetic. While Vantage keypads exhibit understated elegance on the outside, they're built on a strong, reliable architecture, including a two-wire, non-polarized station bus and built-in surge suppression. Keypads are programmed by simply following the software-led installation setup.

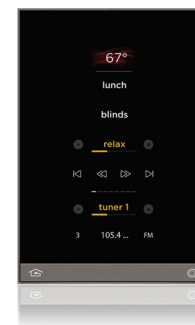
## Wiring Devices

These receptacles, GFCIs and connectivity are now offered in Vantage's TrimLine II faceplates to provide a polished, consistent look to all of the electrical and low-voltage devices in the home. The consistent materials, finishes, and colors make it easier than ever to match keypad styles and provide homeowners with a flawless whole-home décor.



TrimLine Black  
EasyTouch II Keypad  
KS13TE-BKYA

- ◊ Backlit engraved
- ◊ 1-5 Button configurations
- ◊ Status indicator
- ◊ Decorator style opening
- ◊ 1 or 2 Gang configurations



Equinox 4  
EQUINOX4

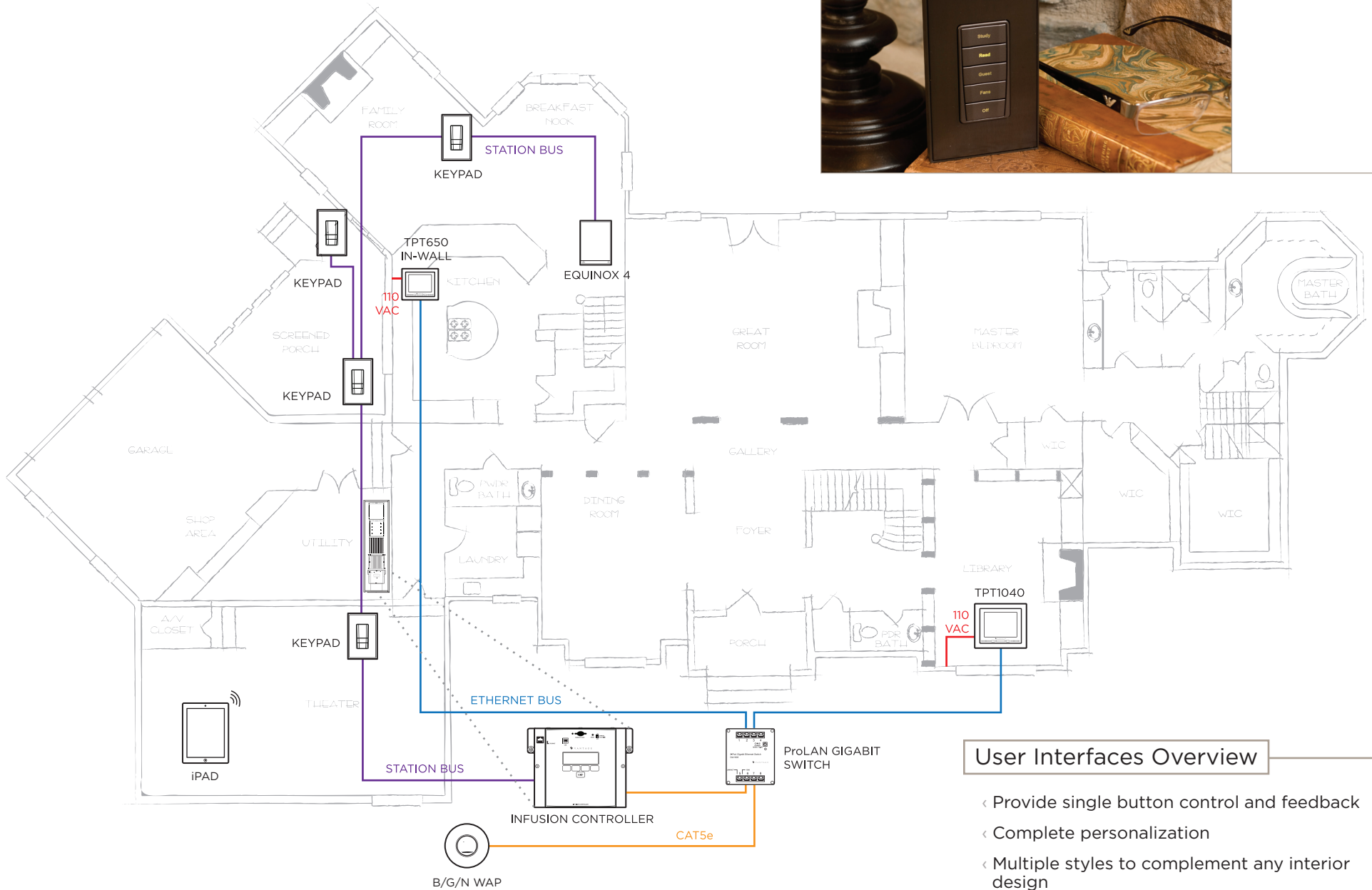
- ◊ 4.3" LCD panel
- ◊ Titanium frame, glass to edge surface aesthetic
- ◊ Ambient light sensor for auto Day/Night backlighting
- ◊ Active IR sensors for approach On & Auto sleep modes
- ◊ Prescribed GUI personalized through Design Center
- ◊ Uses standard US and European wall box mechanics
- ◊ Flick, gesture and touch



Equinox 7-UX  
EQUINOX7-UX

- ◊ 7" LCD Panel
- ◊ Titanium frame, glass to edge surface aesthetic
- ◊ Ambient light sensor for auto Day/Night backlighting
- ◊ Active IR sensors for approach On & Auto sleep modes
- ◊ Prescribed GUI personalized through Design Center
- ◊ Uses standard US and European wall box mechanics
- ◊ Flick, gesture and touch

## USER INTERFACES



# DISTRIBUTED AUDIO

Vantage's distributed audio system lets family members individually create playlists and listen to the music they want in any room, whether the audio source is a CD, MP3 file, network music, or Internet radio. Sources and playlists can be used simultaneously by up to four listeners. The solution includes the 850D Audio Switcher and amplifier and the Digital Music Manager. Both are rack-mounted and connected for central access and control. The entire system is easily controlled through Vantage touchscreens and keypads, which provide the system owner with quick and intuitive access.

## 850D Multi-Room Amplifier

The Vantage 850D Multi-Room Amplifier is one of the most advanced, dedicated multi-room distributed audio amplifiers on the market. Each 850D has independent or linked volume control on each of eight amplifier/pre-amplifier zones and accepts up to 12 input signals from a wide variety of digital or analog sources including DVD and Blu-Ray players, media servers, CD players, cable and satellite boxes, digital music players, and more. Additional 850Ds may be interconnected, providing up to 72 zones of audio.

## Digital Music Manager

Vantage's Digital Music Manager (DMM) allows system owners to aggregate, view and control all of their digital music via a feature-rich interface on any touchscreen throughout the living space. The DMM transparently seeks out all shared digital music files on the network and integrates them into one seamless music library, complete with metadata and album artwork. The system can deliver up to four audio sources to any number of zones through the multi-room amplifier. The DMM can rip and store music on board, provide pre-paid subscription access to Internet Radio and stream music from most MP3 players, allowing a guest's music library to be accessed via a Vantage touchscreen for the duration of their stay.

## InFusion Media

Vantage's in-wall touchscreens, powered by InFusion Media Client™ Software, provide the ultimate in customizable distributed audio control. Touchscreen designs utilize the simple drag-and-drop functionality along with other design elements like pre-programmed templates and widgets.

## Mobile Access

Whether through a remote control or smartphone, Vantage provides multiple options for audio control. The iPhone/iPad app supports full management of audio sources while WebPoint Lite provides higher level access from numerous platforms.



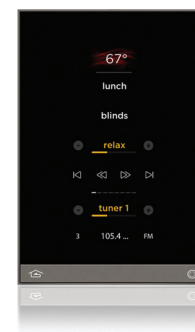
850D Multi-Room Amplifier  
850D-DA

- ◀ Six power stereo zones @ 50 Watts into 8 ohms, 75 Watts into 4 ohms
- ◀ Two stereo preamplifier zones with full control
- ◀ Expandable to 72 zones of control



Digital Music Manager  
DMM-4S

- ◀ 1TB hard drive for music storage and backup (2TB option available)
- ◀ Seamless library of all digital music on the network
- ◀ Customized source and playlist for each member of the family
- ◀ MP3 player docked through USB
- ◀ 10,000+ free Internet radio stations

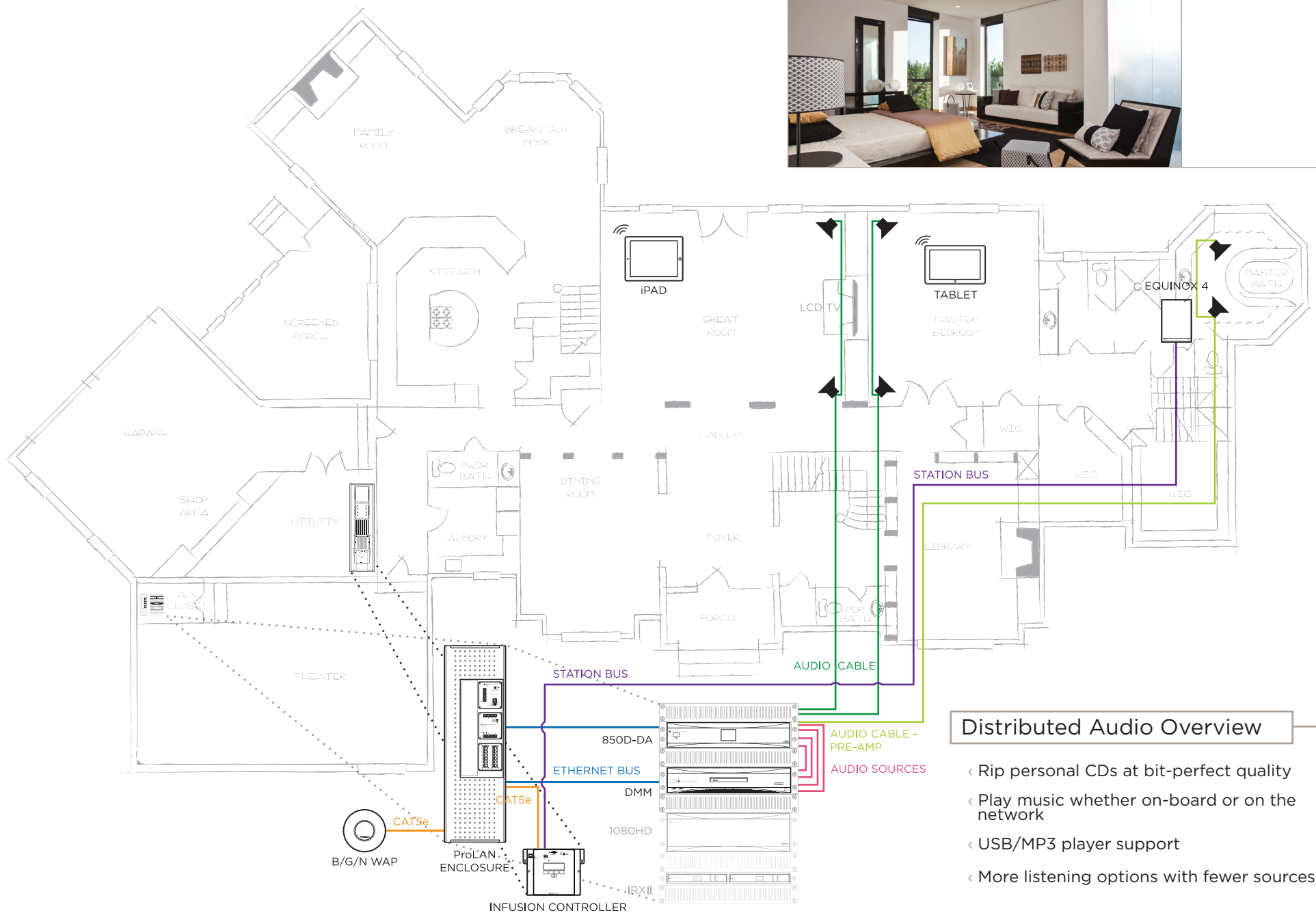


Equinox 4  
EQUINOX4

- ◀ 4.3" LCD panel
- ◀ Titanium frame, glass to edge surface aesthetic
- ◀ Ambient light sensor for auto Day/Night backlighting
- ◀ Active IR sensors for approach On & Auto sleep modes
- ◀ Prescribed GUI personalized through Design Center
- ◀ Uses standard US and European wall box mechanics
- ◀ Flick, gesture and touch



## DISTRIBUTED AUDIO



### Distributed Audio Overview

- ◁ Rip personal CDs at bit-perfect quality
- ◁ Play music whether on-board or on the network
- ◁ USB/MP3 player support
- ◁ More listening options with fewer sources

# DISTRIBUTED VIDEO

Vantage's distributed video solution allows for the selection and viewing of high definition video content throughout the luxury living space. This system utilizes the power of the InFusion Controller with the 1080HD video switcher and the ProLAN network management solution.

## 1080HD Video Switcher

The Vantage 1080HD high definition video switcher gives the homeowner a convenient, future-proofed method of distributing crisp analog and digital high-definition video to multiple displays throughout the home.

The customizable chassis ships standard with eight buffered HD component video inputs, two S-video/composite inputs, with digital audio inputs, and four zone outputs. The modular design of the 1080HD allows for multiple zone and source configurations to suit any project. Through a simple card expansion, each Vantage 1080HD can be configured to support either a 10x4 or 8x8 setup.

The 1080HD RX1 receivers require only a single Cat6 cable to deliver audio, video, and power. This will provide high-definition component video and audio signals to any display within 250 meters of the 1080HD.

## ProLAN

The ProLAN structured wiring solution is the high bandwidth foundation for Vantage's distributed video distribution. By providing a centralized location for the system, the ProLAN enclosure enables installers to "home run" all structured wiring throughout the structure during installation. The cables are then connected to phone, data and video modules. These modules are factory installed and tested and can be easily upgraded over time.



1080HD  
1080HD

- Delivers full HD 1080P component video up to 820 feet (250 meters) over Cat6
- Single-port (Ethernet Bus) control
- Expandable up to 64 zones of video
- Accepts analog and digital high-definition sources



iPhone™ Showing 1080HD  
Multi-Room Video Support

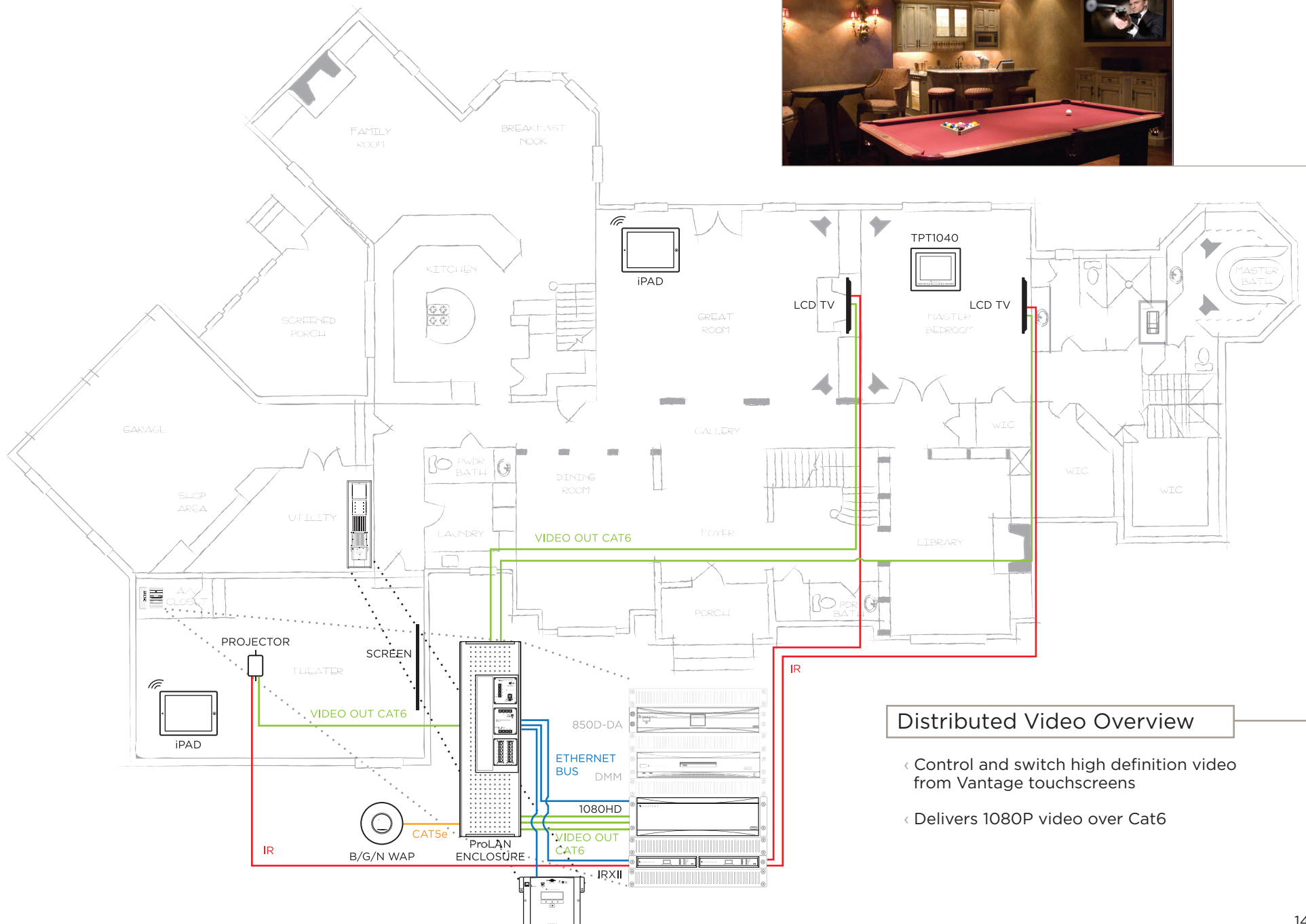
- Select video sources for 1080HD zones
- Driver control for:
  - DVD/Blu-Ray Players
  - Cable/Satellite Receivers
  - Movie Servers
- Available on the iTunes™ App store



Audio/Video Receiver  
RX1

- Receives balanced video, digital audio, and power over a single Cat6 cable
- Converts digital audio to analog audio when required
- Receives 1080P video up to 250 meters (820 feet) when connected to the 1080HD video switch

## DISTRIBUTED VIDEO



### Distributed Video Overview

- ◀ Control and switch high definition video from Vantage touchscreens
- ◀ Delivers 1080P video over Cat6

# MEDIA ROOM/THEATER

The Vantage media room/theater solution combines the control and integration of High Definition Video and Digital Audio, with sophisticated control of lighting to create the perfect entertainment experience. Through a single touch on touchscreen, remote, or keypad interfaces, the dedicated theater or multi-function living space can be transformed into a dramatically lit entertainment venue.

## IRX II Station

Based on a powerful ARM9 32-bit processor, the IRX II (Infrared Emitter Station) provides the processing power as well as IR and serial ports to control the most sophisticated home theater systems. Connected via an ethernet bus or station bus to the InFusion Controller, the IRX II is the hardware interface that gives the system owner complete local and global control of their Vantage-controlled media center/theater.

## Drivers

Software drivers are a key component of the InFusion platform. Vantage provides you with a comprehensive collection of the latest drivers for virtually any hardware device. Our equipment categories include theater, audio, security, comfort control, pool/spa, servers, displays and drapery and shade equipment.

## Shade Control

Vantage's shade control interfaces communicate between SOMFY™ or similar motors and Vantage's InFusion Controller. Shade controls connect to the Vantage controller via RF (RTS) or via Station bus wiring (ILTS). Additionally, Vantage shade control can be accomplished using both low and line-voltage relays.

## Touchscreen and Remote Interfaces

The Vantage iPhone/iPad™ app and touchscreen devices provide a complete and convenient platform for today's media room/home theater environment.



IRX II  
IRXII

Integrates third party A/V components into the Vantage system using:

- ◊ Four back-to-back IR emitters with LED indicators
- ◊ Two RS232 ports
- ◊ Four inputs for contacts or sensors
- ◊ Two IR inputs
- ◊ Two low voltage relays



Samsung™ Series 7  
Displaying Home  
Theater Control

◊ InFusion Media Client™ Software and USB key available for Windows® OS tablets and PCs

◊ Control and feedback for home theater equipment such as Bluray players, surround sound receivers, media servers and other devices

◊ Create scenes for theater control such as "Movie", "Intermission", "Theater Off" and "Music"

◊ Personalization via Vantage's Design Center™ software



Quad Sensor  
QUAD-SENSOR

◊ Provides four products in one by sensing AC current, analog video, digital video and digital audio

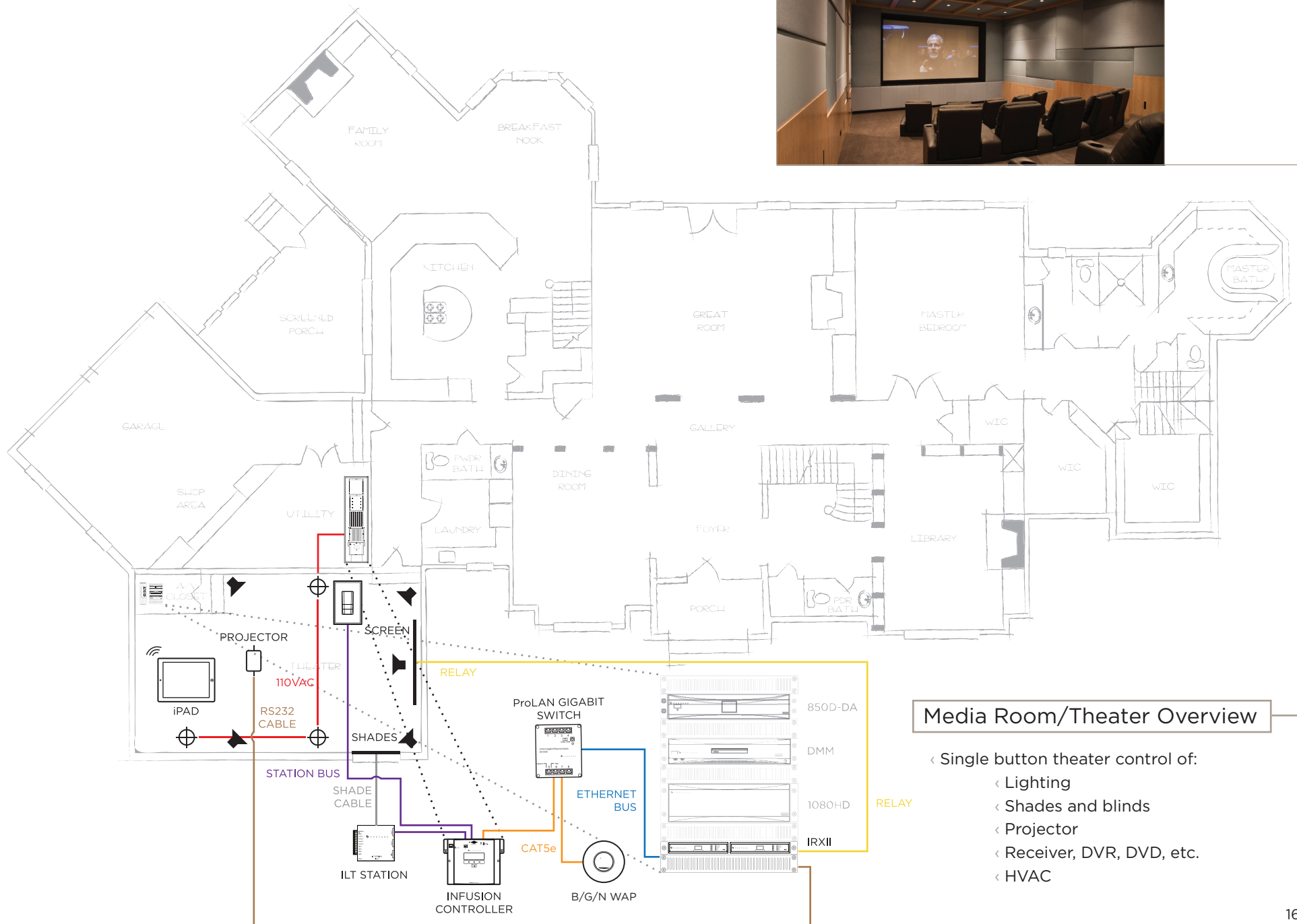
◊ Connects from IRX II to most third party equipment or from the TheatrePoint or Contact Input Station

◊ Gain and delay potentiometers for fine tuning

◊ Includes 4.5 foot (1.4m) cable



## MEDIA ROOM/THEATER



### Media Room/Theater Overview

- ◁ Single button theater control of:
  - ◁ Lighting
  - ◁ Shades and blinds
  - ◁ Projector
  - ◁ Receiver, DVR, DVD, etc.
  - ◁ HVAC

# MOBILE ACCESS

## iPhone and iPad Apps

Transform your iPhone or iPad into a fully mobile interface and manage your Vantage system from anywhere in the world. The combination of iPhone and iPad support for Wi-Fi and the 3G network, along with the devices' sleek touchscreens, make both popular platforms for home automation control.

The iPhone and iPad apps allow users to browse music collections and music sources, control lights, view security camera images, set and view thermostats, manage shades, and much more. These apps are downloadable from the Apple iTunes App Store and can be set up and personalized in minutes.

## WebPoint Lite

Transform your handheld device into a fully mobile keypad and manage your Vantage system from any iPhone, iPod Touch, iPad, Blackberry, Droid, laptop or Windows Mobile device. Connect via Wi-Fi or cellular network to monitor the luxury space from any location.

Using a graphically rich look and feel, users can control multiple locations, such as a main home, second home, office or vacation home by accessing the systems from virtually any browser. Allow up to 16 users with their own discrete login and password to access up to 30 personalized scenes. See the state of any scene with full LED feedback.

The mobile application simply reads the controller information and is configured once the software is downloaded from the Vantage site and installed on a Vantage controller SD card. This method requires no further development or design work required by the dealer or installer. Simply choose which scenes each user sees and from there take command of lights, shades, music, thermostats and more.



iPhone App

- Available on the iTunes App store
- Professional looking GUI for multiple home management
- Control lights through keypads, individual lighting pages or tasks
- Browse music sources and Vantage DMM music collections by album artist, song and playlist as well as internet radio stations
- View IP surveillance cameras
- Set and view thermostats for comfort control
- Use in conjunction with 1080HD to select and control video sources



iPad App

- Available on the iTunes™ App store
- Professional looking GUI for multiple home management
- Control lights through keypads, individual lighting pages or tasks
- Browse music sources and Vantage DMM music collections by album artist, song and playlist as well as internet radio stations
- View IP surveillance cameras
- Set and view thermostats for comfort control



WebPoint Lite  
WPT2

- Control and monitor your system from anywhere with a cell phone or laptop
- iPhone, iPod Touch, Blackberry and Windows Mobile devices supported
- Solution support – Manage lighting, security, camera, comfort and entertainment solutions
- Sets up in minutes
- Download from Vantage dealer site and install onto InFusion Controller SD card







# COMFORT

Vantage's comfort solution is composed of climate and security controls as well as an industry-leading energy management system.

## Energy Management Solution

The Energy Management Solution combines real-time feedback of energy usage with one-touch control of energy consumption. System owners are able to monitor and impact their system's electricity usage by employing one of eight energy saving strategies at the touch of a button. These strategies, including dimming the lights, adjusting the temperature and turning off appliances based on time-of-day or motion sensors, can be locally programmed and are pre-set in the system. Whereas some energy management dashboards simply estimate savings, this is the first system that can be programmed with local power costs to calculate, in real time, the amount a system owner is saving. The solution includes software that easily integrates with the InFusion System, a separate power meter and occupancy and ambient light level sensors.

## Climate Control

The Vantage system provides both local and global control of temperature zones throughout the living space. It recognizes the current temperature, upcoming weather patterns and occupancy to optimize settings and comfort. The solution includes software drivers for HVAC integration, occupancy and temperature sensors and touchscreen control of comfort zones. The system can also be accessed remotely and controlled via Vantage's iPhone Application.

## Security Solution

The Vantage security solution includes software drivers to support any monitoring system and camera integration. System owners can view security images on Vantage touchscreens throughout the home and office or from a remote location via Vantage mobile applications. In addition, Vantage offers occupancy sensors and wired or wireless interfaces for automatic window treatments to provide an additional layer of security.



Energy Dashboard  
Displayed on a TPT1040  
EM-METER1A

- ◀ Up-to-the minute information on energy consumption
- ◀ Actionable strategies to reduce carbon footprint
- ◀ Programmed functions intelligently consider time-of-day, time-of-year, occupancy and other patterns



Thermostat and Motion  
Sensor  
CS-STAT and EM-SENSOR15

- ◀ Sensor inputs provide true hands-free automation
- ◀ Inputs to system for intelligent lighting and HVAC control
- ◀ Maximize the experience with efficient energy consumption

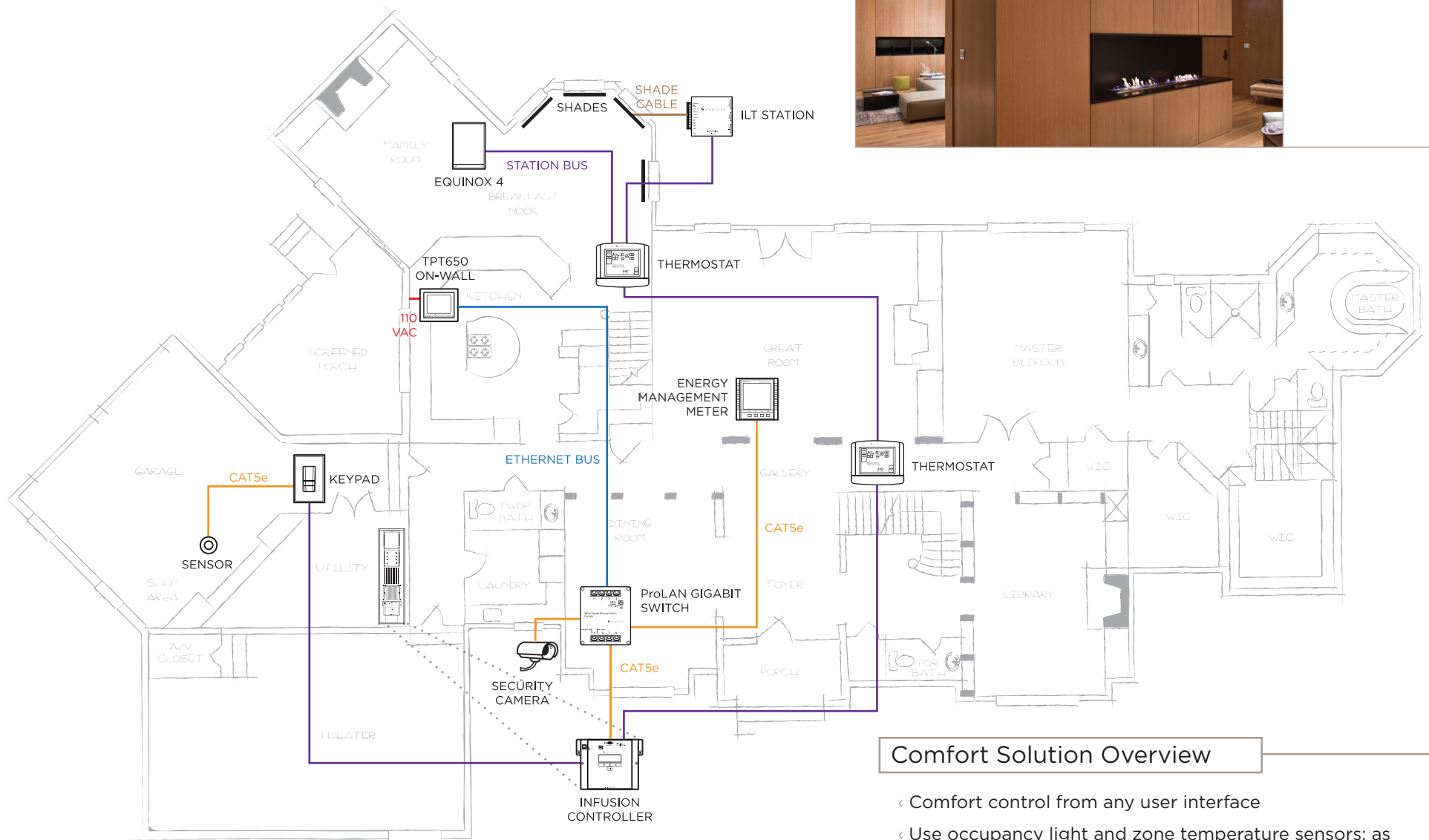


TPT1040 Displaying  
Shade Control  
TPT1040

- ◀ Pathways of light provide safety and security
- ◀ View security cameras from Vantage touchscreens, TVs, and smartphones
- ◀ Create a personal CCTV security network
- ◀ Seamless integration with security providers



## COMFORT SOLUTION



### Comfort Solution Overview

- ◀ Comfort control from any user interface
- ◀ Use occupancy light and zone temperature sensors; as well as thermostats and shade controls to enhance the environment
- ◀ View security cameras from any touchscreen, remote or smart phone

# THE DISTRIBUTED SYSTEM OVERVIEW

The Vantage Distributed Control and Automation System provides the flexibility for installation in new construction, light to full remodel, and retrofit projects. Similar to the Centralized System, the Distributed System enables sophisticated control at the touch of a button. The system employs distributed load control through ScenePoint wallbox control stations. Located inside electrical switch boxes with standard electrical wiring, ScenePoint wallbox control stations communicate via a pre-wired Vantage station bus in the WireLink System or for no-new-wires retrofit applications via RF (radio frequency) communication in the RadioLink or Radio Frequency Lighting Control (RFLC) systems.

In support of the complete lighting system, this design replaces traditional dimming or switching methods, providing system owners with complete control of their entire system from attractive and easy-to-use Vantage keypads or WiFi/web-enabled devices. These user interfaces provide the maximum amount of control while significantly reducing wall clutter.

In addition to lighting, the Vantage Distributed System enables control of distributed audio/video, security, climate control, energy management, theater systems and more. And, it's accessible from the Internet or any web-enabled phone, providing complete access and control from any location.









# DISTRIBUTED WIRED SYSTEM - INFUSION WIRELINK

A Distributed Pre-wire Design is typically installed in new construction and partial or full remodel projects. This design utilizes ScenePoint wallbox control stations to directly control all lighting loads and to indirectly control any other load or device in the home or office. The stations communicate with any controller through the low voltage Vantage station bus. This design is simple for end users to understand since the lighting loads are controlled by simply replacing standard lighting control devices with Vantage ScenePoint Dimmers or Relays. The design is ideal for those who want to pre-wire to allow the possibility of adding control stations at a later date.

## InFusion Controller

The InFusion Controller is one of the most powerful automation system controllers on the market. Based on Intel's Xscale® processor, the controller has superior acceleration and an expansive memory capacity to store and execute commands for delay-free control of simple or complex lighting systems.

## Enclosure

The enclosures for Distributed Systems house the controller, are available in either rack mount or surface mount configurations and are designed for quick and easy installations.

## ScenePoint Dimmer Keypad - WireLink

ScenePoint is a combination standard wall box dimmer and keypad in one device. ScenePoints are powered by the local line feed and replace standard high voltage wall switches. ScenePoints can be ganged together with single or multi-station configurations. Backlit laser engraved technology is also available through the EasyTouch II aesthetic for WireLink configurations. WireLink ScenePoints connect to the Vantage system similar to a keypad via the two-wire station bus.

## Touchscreens

Vantage touchscreens complement a completely integrated Vantage system. Powered by Vantage's InFusion Media software, the touchscreens are available in a variety of sizes. Touchscreens provide system users with immediate access to and control of the entire Vantage experience including lighting, comfort and entertainment. And, for custom control, touchscreens can be personalized using the system's intuitive drag-and-drop programming.



Rack Mount Enclosure  
IRME-36

- Designed for quick installation
- Rack or surface mount available
- Designed for distributed WireLink or RadioLink installations
- Available in 36 or 24 volt versions



EasyTouch II ScenePoint  
Dimmer - WireLink  
DS13TE-AWYA

- Full-range RGB backlighting with a built-in diffuser
- Laser engraving allows only the lettering on each button to be illuminated
- Hidden ambient light sensor for automatic day/night backlight intensity control
- Hidden IR receiver for convenient remote control of the keypad

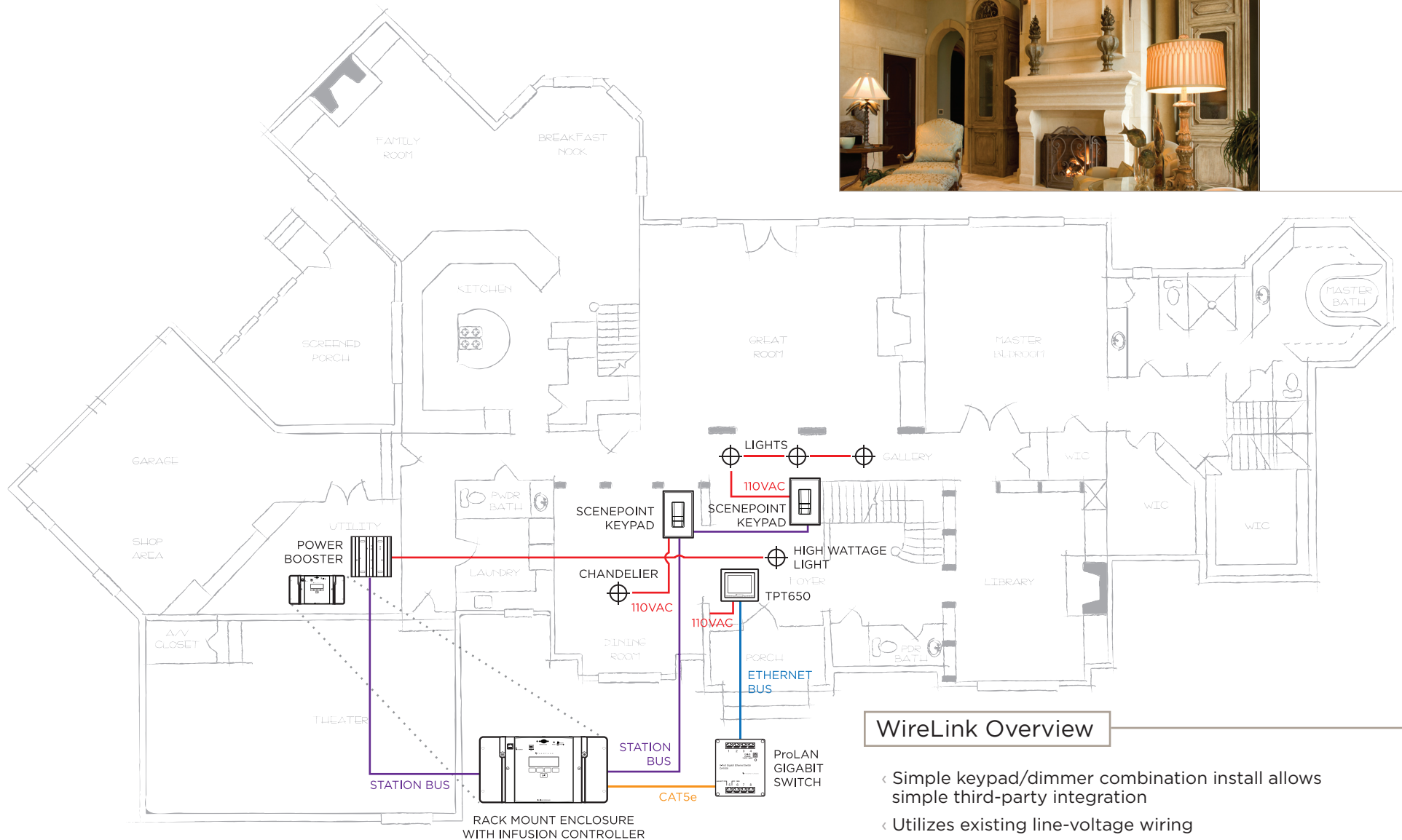


TPT650  
TPT650

- Digital 640x480 wide viewing angle 6.5" LCD
- Personalization via Vantage's Design Center software
- SD Card expansion slot for nearly unlimited graphics
- 4 Input sources for composite video and stereo audio



## WIRELINK OVERVIEW



### WireLink Overview

- ◀ Simple keypad/dimmer combination install allows simple third-party integration
- ◀ Utilizes existing line-voltage wiring
- ◀ Pre-wire capability
- ◀ Local lighting control provides dependable operation

# DISTRIBUTED RADIO SYSTEM - INFUSION RADIOLINK

The Vantage RadioLink System provides an ideal solution for full retrofit projects where use of existing high voltage wiring is desired. A Distributed Design with RadioLink utilizes wireless ScenePoint wallbox dimmer stations to directly control all lighting loads and to indirectly control any other load or device in the home or office. This wireless Distributed Design is the most powerful and flexible retrofit configuration available, because it uses existing wiring and does not require the use of control and communication wires. The stations communicate with any RadioLink enabled controller through radio frequency (RF). This design is simple for end users to understand since the lighting loads are controlled by simply replacing existing toggle switches with Vantage RadioLink ScenePoint Dimmers.

## InFusion Controller

The InFusion Controller is one of the most powerful automation system controllers on the market. Based on Intel's Xscale® processor, the controller has superior acceleration and an expansive programming memory capacity to store and execute commands for delay-free control of small or large, complex lighting and automation systems. The controller is surface-mounted using the surface mount enclosure.

## ScenePoint Dimmer Keypad - RadioLink

ScenePoint is a combination standard wall box dimmer (relay or dual relay) and keypad in one device. ScenePoints are powered by the local line feed and replace standard high-voltage wall switches. Like WireLink, RadioLink can be ganged in single or multi-station configurations. Backlit laser engraved technology is also available through the EasyTouch II aesthetic for RadioLink. RadioLink ScenePoints communicate with the Vantage system wirelessly via RadioLink, a proprietary communication protocol.



RadioLink Kit  
KIT-ETIIR-AW

- ◀ Incorporates up to 60 RF stations per enabler
- ◀ Communicates with and connects to any Vantage controller
- ◀ Operates at 900 MHz for clear FM transmissions
- ◀ Features a 100 foot transmission radius per enabler
- ◀ Programmed using the same software as the centralized system



Radio Dual Relay  
RDR15TE-IVYA

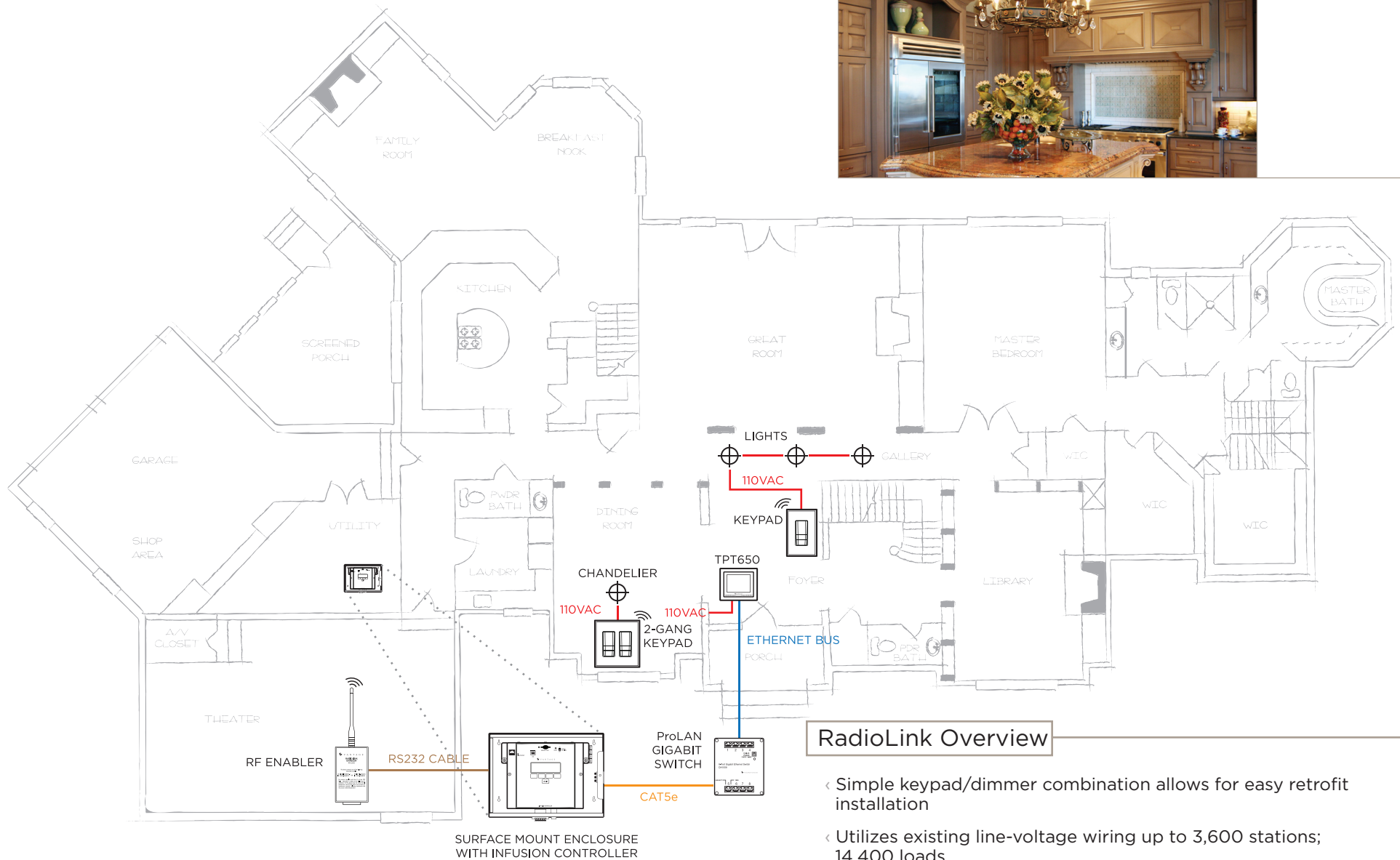
- ◀ Used for multi-directional motors and provides hardware interlock
- ◀ Controls two separate loads from a single wall box
- ◀ Reduces wall clutter
- ◀ Available in WireLink and RadioLink



EasyTouch II ScenePoint  
Dimmer - RadioLink  
RD13TE-BKYA

- ◀ Power via local line feed
- ◀ RF Dimmer communicates with the system through RadioLink
- ◀ Programmable to control any and all Vantage connected devices
- ◀ Available in WireLink and RadioLink

## RADIOLINK OVERVIEW



### RadioLink Overview

- ◀ Simple keypad/dimmer combination allows for easy retrofit installation
- ◀ Utilizes existing line-voltage wiring up to 3,600 stations; 14,400 loads
- ◀ Pre-wire not required
- ◀ Incorporates up to 60 RF stations per enabler
- ◀ Communicates seamlessly with any Vantage controller

# DISTRIBUTED RADIO SYSTEM - RADIO FREQUENCY LIGHTING CONTROL (RFLC)

For budget-conscious projects, the Vantage Radio Frequency Lighting Control (RFLC) system is recommended. A distributed design with RFLC utilizes wallbox dimmer stations to directly control all lighting loads in the home or office. Dimmers and switches are controlled wirelessly using proprietary RF communication protocols. This RFLC wireless distributed design is the most cost effective retrofit configuration available from Vantage. Similar to RadioLink, RFLC uses existing wiring and does not require the use of control and communication wires. However, RFLC keypads do not have the depth of programming that all InFusion keypads have. The stations communicate with each other through radio frequency (RF). This design is simple for end users to understand since the lighting loads are controlled by simply replacing existing toggle switches with Vantage RFLC dimmers and switches. RFLC can be integrated into Vantage InFusion projects via Design Center programming.

## Distributed Control

The distributed retrofit design is a true retrofit configuration for whole home or office lighting control, because it uses the same wiring plan as a home or office without a control system. This design is ideal for those who want to allow the possibility of adding control stations at a later date.

## Keypads

With RFLC, loads are controlled locally by dimmers, switches, and fan controls. Scenes are controlled by InFusion EasyTouch II keypads.

## Coordinated Wiring Devices

Maintain a harmonious look and also simplify your ordering process with a complete line of matching wiring and connectivity devices available for the RFLC System.

## Integration

RFLC integrates seamlessly into a full InFusion system using the RFLC Enabler (MR232). This device enables InFusion control of all RFLC load control devices. Vantage enabled RTI remotes also provide wireless RS232 control of RFLC scenes.



RFLC Kit  
KIT-RFLC-AW

- Standard electrical wiring connections
- No control wiring necessary
- Proprietary RF communication protocol; 900MHz Radio, bidirectional
- Soft start technology significantly extends lamp life by limiting inrush current
- Compatible with most load types
- Patented overload and short circuit protection



TrimLine II RFLC Dimmer and  
EasyTouch II Keypad  
DRD4-W, RD13TE-AWYA,  
TR-22NAP-AW and FP2DTE-AWNP

- Provides “scene-level” control of multiple Enspire dimmers, switches and fan controllers
- Standard electrical wiring connections
- No control wiring necessary
- Proprietary RF communication protocol; 900MHz bidirectional radio

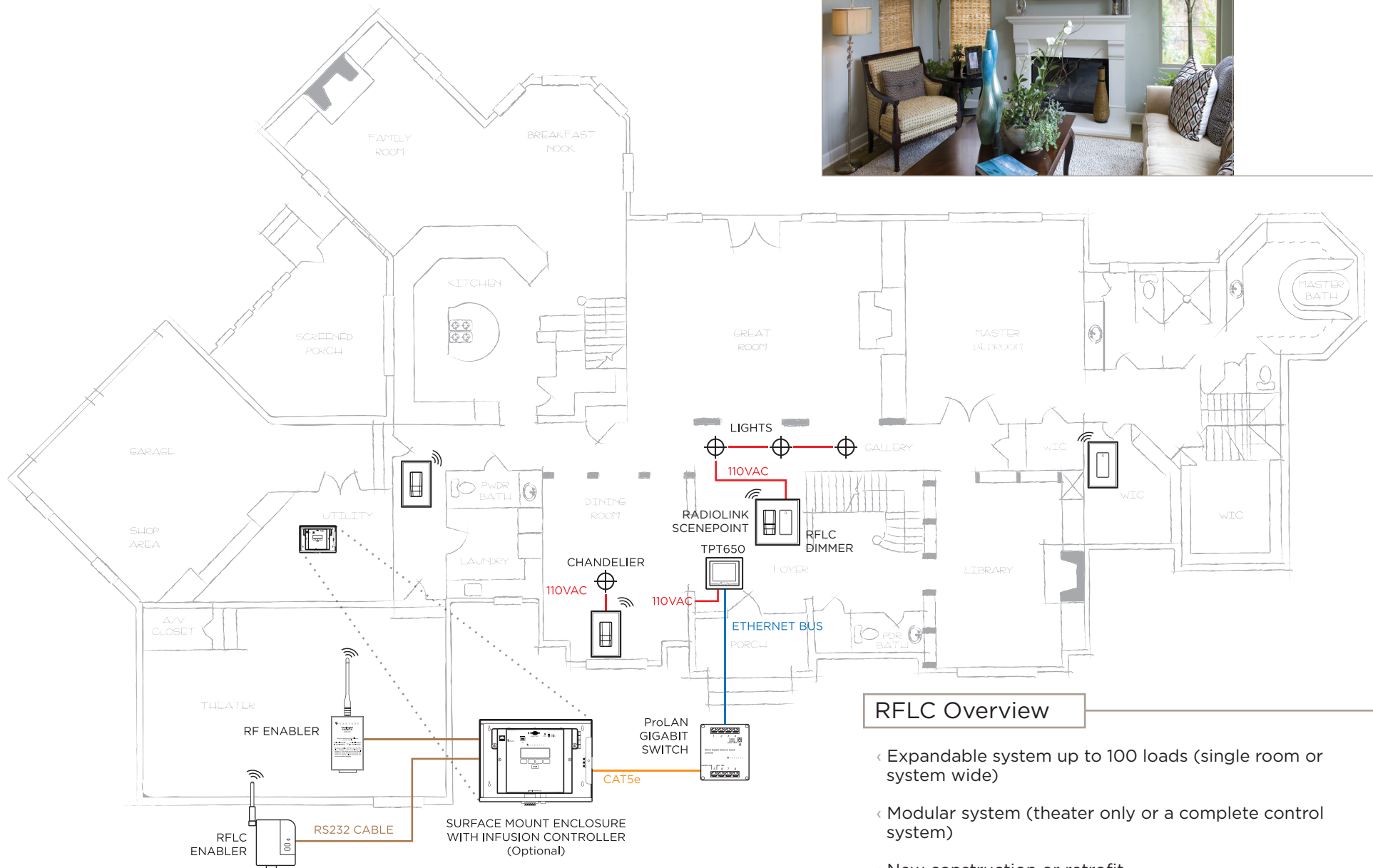


RFLC Enabler  
RFLC-V232

- No control wiring necessary
- Enables InFusion control of all RFLC devices
- Proprietary RF communication protocol; 900MHz Radio, bi-directional



## RFLC OVERVIEW



# INFUSION HYBRID SYSTEM - CENTRALIZED + DISTRIBUTED

The Vantage Hybrid Control and Automation System provides the ultimate flexibility for installation in new construction, light to full remodel projects, and retrofit opportunities. Utilizing elements of Centralized and Distributed Systems enables sophisticated control at the touch of a button in any construction scenario. This design is perfect for the end user who wishes to start with a more basic system and then enlarge it at a later date; and for extension of a centralized system to areas where it is difficult to run new wires.

## Hybrid Control

The Hybrid Design allows end users to dim and toggle loads directly, providing dependable operation and control. Plus it removes multiple banks of toggle switches and replaces them with a stylish keypad for multi-room and multi-scene controls.

## RadioLink Enabler

The Vantage RadioLink Enabler is a wireless transceiver that adds radio frequency (RF) communication ability to a standard wired Vantage system. By connecting a RadioLink Enabler to an existing Vantage InFusion Controller, RF enabled keypads and other station devices are able to communicate with the system. Each RadioLink Enabler supports up to 60 RadioLink stations with a transmission radius of up to 100 feet.

## Keypads

Because ScenePoint dimmer stations are a combination keypad and dimmer, it is not necessary to install additional keypads to control the loads the dimmers are wired to. The buttons on the dimmer stations are fully programmable and can control the load directly tied to it or any other ScenePoint load or load connected to the Vantage Power Enclosure. In addition, this design allows installers to pre-wire any and all non-system switch locations so ScenePoint Dimmer stations could be added at a later date.

## RFLC

The Vantage RFLC Enabler is a wireless transceiver that adds RFLC radio communication ability to a standard wired Vantage system. By connecting an RFLC Enabler to an existing Vantage InFusion Controller, RF stations are able to communicate with the system. Each RFLC Enabler supports up to 100 RFLC stations with a transmission radius of up to 100 feet.



InFusion Main Power  
Enclosure  
IMPE-4-IC24

- ◀ Houses one Main Controller and up to four modules
- ◀ Plug-and-play module fittings
- ◀ 16-in (40.64 cm) o.c. recessed or surface mount
- ◀ Custom fitted hinged door for recessed or surface installs
- ◀ Factory installed low-voltage wiring harness eliminates the need to wire between modules
- ◀ 52" x 14.5" x 4" (32cm x 37cm x 10cm)



EasyTouch II ScenePoint  
Dimmer  
RD13TE-TIYA

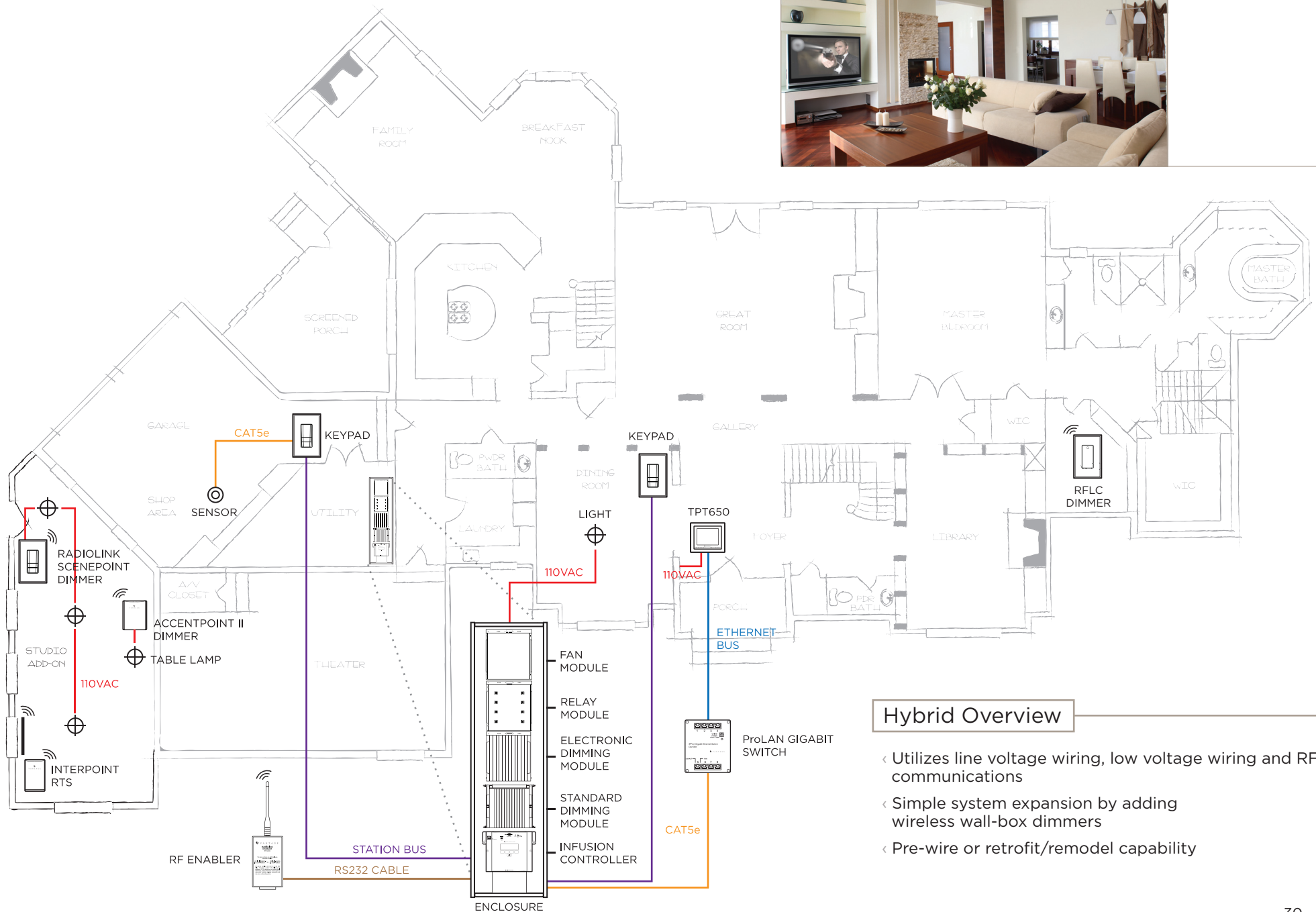
- ◀ Incorporates up to 60 RF stations per enabler
- ◀ Communicates with and connects to any Vantage controller
- ◀ Operates at 900 MHz for clear FM transmissions
- ◀ Features a 100 foot transmission radius per enabler
- ◀ Programmed using the same software as the centralized system



AccentPoint II Dimmer  
APDIM

- ◀ Plugs into a standard electrical outlet
- ◀ Communicates with the Vantage System through RadioLink technology
- ◀ Enables two separate devices to be independently controlled by commands received from keypads, timed events, sensors, and more
- ◀ Provides 300 Watts of dimming control per load

## HYBRID OVERVIEW



### Hybrid Overview

- ◁ Utilizes line voltage wiring, low voltage wiring and RF communications
- ◁ Simple system expansion by adding wireless wall-box dimmers
- ◁ Pre-wire or retrofit/remodel capability

# COMMERCIAL SYSTEM

The Vantage Commercial System is primarily a centralized system that is designed for use throughout North America, the Pacific, the Caribbean and other regions of the world that have adopted North American electrical standards. Components for this system are UL listed. The Commercial System can be combined with a Distributed System for use in retrofit applications. More information on this type of “hybrid” system can be found on page 29.

## Commercial Enclosure

Typically installed adjacent to electrical panels, the Vantage enclosure houses an InFusion Controller and up to four separate plug-and-play modules for quick and easy installations. A single main power enclosure (IMPE-4-36) can support up to 48 loads, while the addition of six secondary power enclosures can expand the system to control a total of 336 loads. At full capacity, a Vantage system combines 31 main power enclosures and 180 secondary enclosures, for a total of up to 10,128 wired loads.

## InFusion Controller

The InFusion Controller is one of the most powerful automation system controllers on the market. Based on Intel's Xscale® processor, the controller has superior acceleration and an expansive programming memory capacity to store and execute commands for delay-free control of simple or complex lighting and automation systems.

The controller is specifically designed to offer fast and intuitive installation. The Ethernet connection supports full IP connectivity, while five RS-232 ports and up to two RS-485 ports provide enough device connections for initial installation and expansion later. Installers save time and money programming the controller with InFusion Design Center, Vantage's upgradeable, user-friendly software.

## Standard Dimming Module

Modules are the high-voltage lighting and load control points for the centralized system. Each light or load in the system is “home-run” wired back to a module, which is installed in the Vantage enclosure. The Standard Dimming Module controls up to 64 amps and 12 dimmable loads, including incandescent and fluorescent lights, magnetic low-voltage, electronic low-voltage, neon, cold cathode and variable speed motors. For approved LED luminaires please visit [www.vantagecontrols.com](http://www.vantagecontrols.com).

\*The system is rated up to 240 Volts with support up to 277 Volts in certain products.



InFusion Main Power Enclosure  
IMPE-4-IC36

- ◀ Houses one Main Controller and up to four modules
- ◀ Plug-and-play module fittings
- ◀ 16-in (40.64 cm) o.c. recessed or surface mount
- ◀ Custom fitted hinged door for recessed or surface installs
- ◀ Factory installed low-voltage wiring harness eliminates the need to wire between modules
- ◀ 52" x 14.5" x 4" (32cm x 37cm x 10cm)



Sensors  
EM-LIGHTSENSOR, EM-MOTION-SENSOR40, FL-MS MINI 360 and EM-MOTIONSENSOR20

- ◀ Sensor inputs provide true hands-free automation
- ◀ Inputs to system for intelligent lighting and HVAC control
- ◀ Maximize the experience with efficient energy consumption

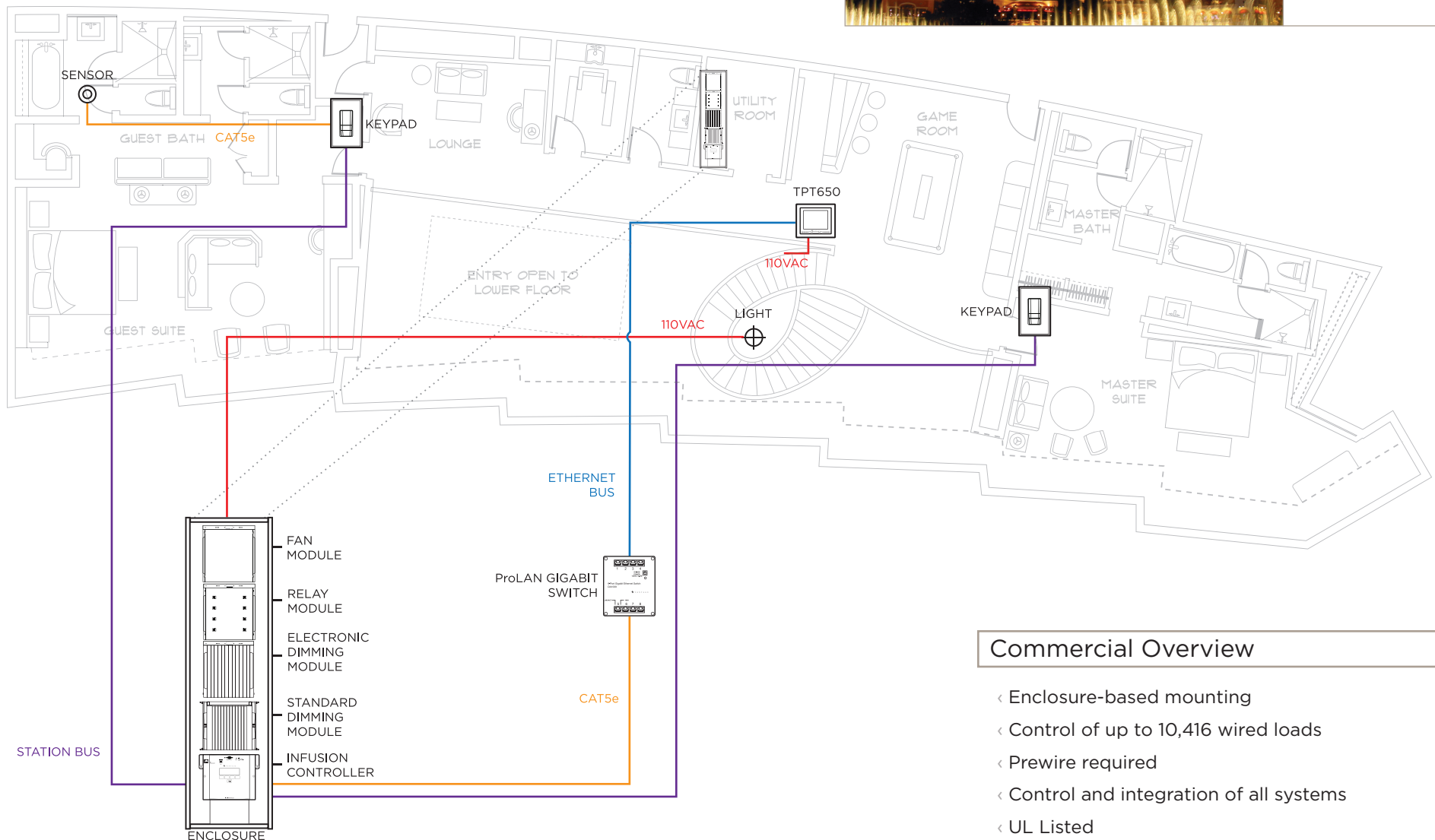


Keypads  
KS14XR-AWYA and KS13TE-AWYA

- ◀ Mechanical or laser-engraved
- ◀ Standard keypad configuration 1-8 button, EasyTouch II, 3 or 5 button
- ◀ Status indicator
- ◀ Single or multi-gang configurations



## COMMERCIAL OVERVIEW



### Commercial Overview

- ◀ Enclosure-based mounting
- ◀ Control of up to 10,416 wired loads
- ◀ Prewire required
- ◀ Control and integration of all systems
- ◀ UL Listed

# SOFTWARE and INTEGRATION

Fully integrated projects are what make for a rich and unique automation experience. Vantage's industry-leading suite of software and integration tools provides installers with the tools necessary for complete project programming, including personalized keypad and touchscreen navigation and control, as well as reliable integration and feedback of distributed audio/video systems, HVAC controllers, security panels, shade controls, pool and spa equipment, theaters and other systems.

## Design Center

Design Center is the most intuitive and easy-to-use software tool in the industry, and is specifically designed for programming solutions to meet the complete needs of any project. Managing projects that include lighting, comfort, audio, theater and other sub-systems has never been easier, as Design Center enables the use of every system element via one convenient software program. Additionally, reports, touchscreen templates and system diagnostic tools are included in Design Center for an efficient approach to project design and commissioning. Dealers can create and save program templates that facilitate programming for future projects.

## InFusion Media Client™

The software that powers Vantage in-wall touchscreens is now available for Windows OS tablets and PCs. InFusion Media Client Software, the Touchscreen Designer in Design Center and the IMC-USB key together empower the Vantage dealer to easily deliver elegant interface solutions to the homeowner. Gain real-time access to lighting, AV systems, shades, security cameras, climate control, energy management and more. With a Windows OS device users can seamlessly communicate with a Vantage InFusion control system on the local network via wi-fi or hard-wired connection.

## InFusion Media Server

Music management software at its best. Find it on Vantage's own Digital Music Manager (DMM) or simply install it onto any Windows PC and turn that machine into a powerful digital jukebox for use as a source in multi-room audio systems. Works with iTunes™, Windows Media Player® and Windows XP Media Center®. Combine it with InFusion Media Client (separate download) and the Music Widget for a complete graphical interface on any Vantage touchscreen or Windows® OS tablet.



Design Center

- Simple programming of complex scenes, modes and equipment commands
- Integrated driver library with drag and drop objects
- Project reports, diagnostic and troubleshooting tools
- Save and reuse programming
- Customize object libraries
- TPT Designer for touchscreen personalization



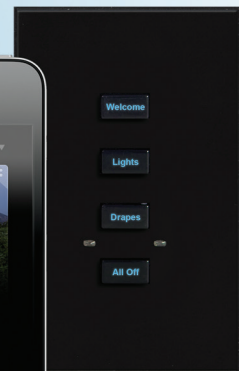
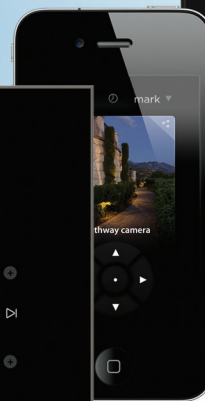
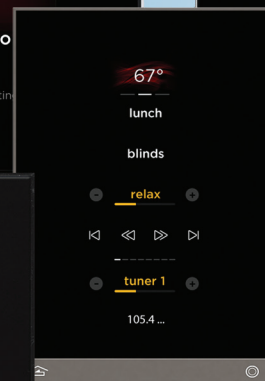
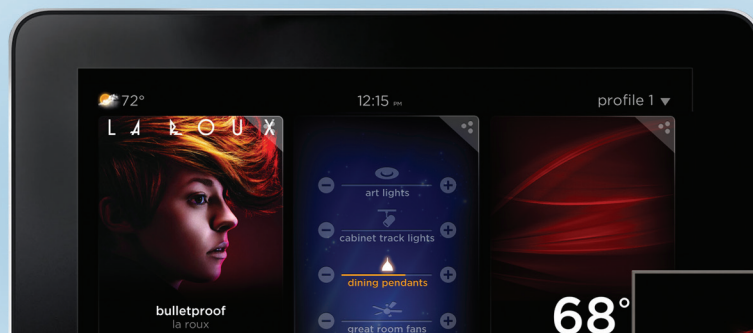
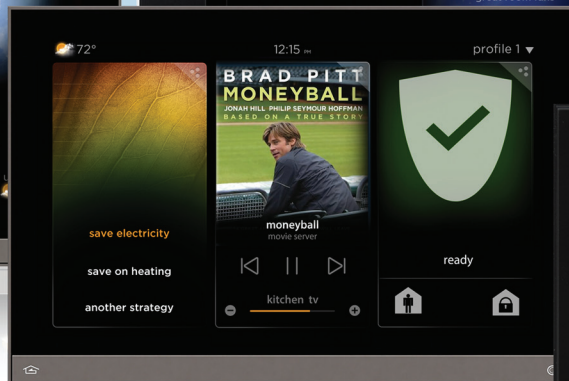
InFusion Media Client  
IMC-USB

- Software powering Vantage in-wall touchscreens now available for Windows® OS tablets and PCs
- Widgets available for:
  - Music libraries
  - Lighting
  - Weather Forecasts
  - Energy Management and Usage
  - Web Browsers
  - Security Cameras
  - Photo Galleries



InFusion Media Server

- Software for turning any PC into a digital jukebox source for multi-room audio systems
- Download and install from Vantage dealer website
- Works with iTunes®, Windows Media Player®, Windows XP Media Center®
- Compatible with Windows XP, Vista® and 7 OS (32 bit and 64 bit)



# INTEGRATION PARTNERS

## Software Drivers

Software drivers are a key component of the InFusion platform. Vantage provides a comprehensive collection of the latest drivers for a large number of hardware devices. Equipment categories include theater, audio, security, comfort control, pool/spa, drapery and shade equipment and more.

## Driver Tools

Driver Tools is the application that is used to build one-way and two-way communication drivers for any IR, serial or IP based device. Dealers can utilize Vantage Driver Tools Software to create hardware drivers for their own projects. Once a driver is built for a device the driver can be saved in the dealer's software library for re-use on future projects.

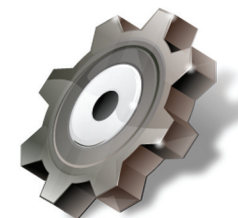
## Partners

Vantage encourages and promotes relationships with key industry partners by sharing protocols, equipment, and dealer support to provide a comprehensive customer experience. Some of our key industry partner's logos appear on the facing page.



Driver Tools

- ◀ Driver Tools is used by Vantage software engineers to build, test and certify complex drivers
- ◀ Create TCP/IP, RS-232 and IR drivers
- ◀ Available for download through the dealer website
- ◀ Simple to moderate bi-directional drivers can be created by dealers



Drivers

- ◀ Available for download through Design Center for project use
- ◀ Key manufacturers and devices supported
- ◀ TCP/IP, RS232 and IR drivers available
- ◀ Categories include:
  - Distributed audio
  - Media room/theater equipment
  - Security systems
  - Media servers
  - HVAC systems
  - Shade controls
  - Pools and spas

[www.vantagecontrols.com](http://www.vantagecontrols.com)



# INTEGRATION PARTNERS

## VANTAGE PREMIER PARTNERS

### AUDIO / VIDEO



### POOL / SPA



### POWER / ENERGY

### CLIMATE / COMFORT



### CAMERAS



### NETWORKING

### SECURITY



## VANTAGE PARTNERS



# PRODUCT REFERENCE OVERVIEW

The following product reference section includes images and key features for all Vantage products. Divided by product category, the section contains all of the information you will need to choose the perfect products for your next Vantage installation.

Additional product information and support tools can also be found online at [www.vantagecontrols.com](http://www.vantagecontrols.com).



|                               |  |
|-------------------------------|--|
| USER INTERFACES               | <ul style="list-style-type: none"> <li>Keypad and Faceplate Options &lt; 39</li> <li>Wiring and Connectivity Devices &lt; 45</li> <li>Remotes &lt; 47</li> <li>Touchscreens &lt; 47</li> <li>HVAC &lt; 48</li> </ul>                             |
| LOAD CONTROLS                 | <ul style="list-style-type: none"> <li>Modules &lt; 49</li> <li>Plug-in Modules &lt; 50</li> <li>Relay and Output Stations &lt; 50</li> <li>ScenePoint (WireLink and RadioLink) &lt; 51</li> <li>High Wattage Dimmer Stations &lt; 53</li> </ul> |
| INTEGRATION MODULES           | <ul style="list-style-type: none"> <li>Contact Input Stations &lt; 54</li> <li>Drapery and Shade Control &lt; 54</li> <li>Port Control Devices &lt; 55</li> </ul>  |
| ENERGY MANAGEMENT             | <ul style="list-style-type: none"> <li>Energy Management &lt; 56</li> <li>Sensors &lt; 57</li> </ul>   |
| CONTROLLERS                   | <ul style="list-style-type: none"> <li>InFusion &lt; 58</li> </ul>   |
| AUDIO and VIDEO               | <ul style="list-style-type: none"> <li>Video &lt; 59</li> <li>Audio &lt; 59</li> <li>Infrared Controls &lt; 60</li> </ul>  |
| INFRASTRUCTURE and ENCLOSURES | <ul style="list-style-type: none"> <li>InFusion &lt; 61</li> <li>ProLAN &lt; 62</li> </ul>   |
| SOFTWARE                      | <ul style="list-style-type: none"> <li>Design Center &lt; 68</li> <li>Driver Tools &lt; 68</li> <li>InFusion Media &lt; 68</li> <li>Mobile Access &lt; 68</li> <li>Energy Management Dashboard &lt; 68</li> </ul>                                |
| RFLC                          | <ul style="list-style-type: none"> <li>User Interfaces and Load Controls &lt; 69</li> <li>RFLC Kits &lt; 70</li> </ul>   |

# USER INTERFACES

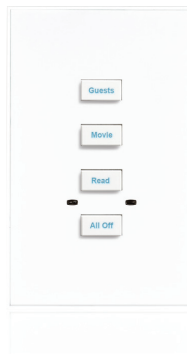
NOTE: Faceplates are ordered separately. See pages 39-44.

## Keypad Collection



**EasyTouch II Keypad Station**  
KSxxx

- ◁ True type font laser engraved text for 1-5 configured buttons
- ◁ Full range RGB adjustable backlight for buttons
- ◁ Hidden IR receiver and ambient light sensor for automatic day/night backlight intensity control
- ◁ Accepts multi-event programming on a single button
- ◁ Uses the standard Vantage two-wire, non-polarized station bus
- ◁ Compatible with 24-volt or 36-volt station bus
- ◁ Stations are compatible with Clip-loc or Clip-loc II faceplate fastening
- ◁ Built-in surge suppression



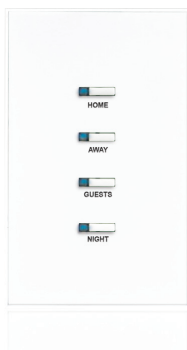
**RPTouch Keypad Station**  
KSxxx

- ◁ 1-8 buttons per gang
- ◁ Provides LED button lighting with adjustable brightness levels
- ◁ RPTouch is a backlit laser engraved button with full range RGB LED
- ◁ Uses a two-wire, non-polarized station bus
- ◁ Features the unique clip-loc bracket to securely fasten the faceplate to the station



**SquareTouch Keypad Station**  
KSxxx

- ◁ 1-8 buttons
- ◁ SquareTouch mechanically engraved buttons and provides LED status indication in either red/green or red/blue configurations
- ◁ Uses a two-wire, non-polarized station bus
- ◁ Features the unique clip-loc bracket to securely fasten the faceplate to the station



**FineTouch Keypad Station**  
KSxxx

- ◁ 1-8 buttons per gang
- ◁ FineTouch mechanically engraved faceplate and provides LED status indication in either red/green or red/blue configurations
- ◁ Uses a two-wire, non-polarized station bus
- ◁ Features the unique clip-loc bracket to securely fasten the faceplate to the station



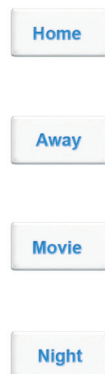
# USER INTERFACES

## Button Styles



**EasyTouch II**  
BTNxxxE

- Available in 1-5 button configurations
- Custom laser engraving in true-type fonts
- LED backlighting available in any color



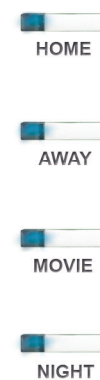
**RPTouch**  
BTNxxxR

- Available in 1-8 button configurations
- LED backlighting available in any color
- Custom laser engraving in true-type fonts
- Subtle aesthetic



**SquareTouch**  
BTNxxxS

- Available in 1-8 button configurations
- Popular design perfect for traditional and contemporary homes
- Custom mechanical engraving
- Blue or green LED indicators



**FineTouch**  
BTNxxxF

- Available in 1-8 button configurations
- Subtle, delicate design
- Custom mechanical faceplate engraving
- Blue or green LED indicators

## Faceplate Aesthetics



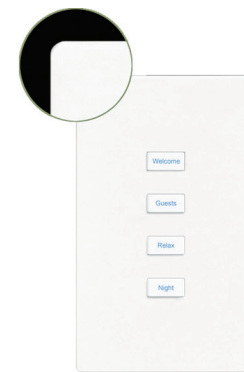
**TrimLine II**  
FPxxT

- The TrimLine design offers the most versatility, allowing you to select a trim finish that matches or accents your faceplate finish



**SoftLine**  
FPxxS

- With gently sloping edges that blend into the wall, SoftLine is the perfect choice for a classic design style



**Align**  
FPxxL

- The Align design employs dramatic right-angles and striking lines for a contemporary, polished finish

# USER INTERFACES

## Standard Finishes

### Metal



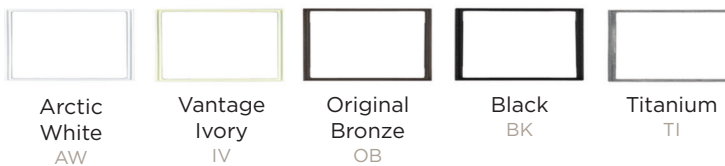
### Plastic TrimLine II Faceplates



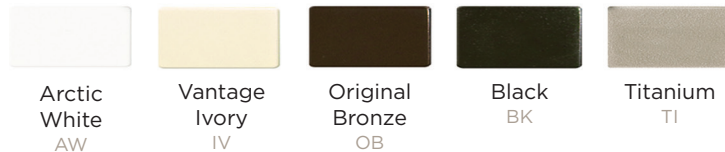
### Plastic SoftLine Faceplates



### Trims



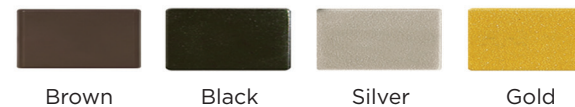
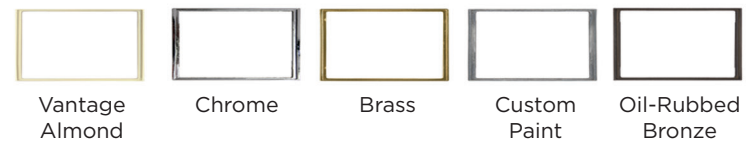
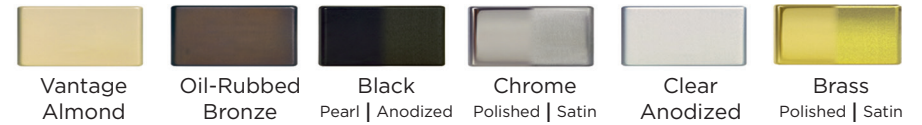
### Buttons EasyTouch II RPTouch



### Buttons SquareTouch FineTouch



## Custom Finishes



# USER INTERFACES

## Bticino Axolute Keypad Collection



### Bticino Axolute Rectangular Keypad

HA4803xxx

- ◀ Six buttons per keypad
- ◀ Provides full range RGB LED button lighting with adjustable brightness levels
- ◀ Built-in surge suppression
- ◀ Uses a two-wire, non-polarized station bus



### Bticino Axolute Elliptical Keypad

HB4803xxx

- ◀ Six buttons per keypad
- ◀ Provides full range RGB LED button lighting with adjustable brightness levels
- ◀ Built-in surge suppression
- ◀ Uses a two-wire, non-polarized station bus

## Bticino Axolute Button Color Options



Charcoal  
KA13C



Silver  
KA13S



White  
KA13W

## Bticino Axolute Standard Keypad Finishes - HA4803USxxx and HB4803USxxx



Kristall Glass  
VKA



Brushed Aluminum  
XC



Teak  
LTK



Brushed Stainless  
Steel  
ACS



Liquid White  
DB



Liquid Ivory  
DA



Cherry Wood  
LCA

# USER INTERFACES

## Bticino Axolute Specialty Keypad Finishes - Rectangular - HA4803USxxx

### Anodized



Brushed Chrome  
CR



Brushed Bronze  
BR



Brushed Mercury  
AZ



Silver  
SA

### Aluminum



Brushed Aluminum  
XC



Brushed Anthracite  
XS



Brushed Titanium  
NX

### Glass



Kristall Glass  
VKA



Black Glass  
VNN



Mirror Glass  
VSA



Blue Glass  
VZS

### Wood



Ashwood  
LFR



Teak  
LTK



Wenge  
LWE

### Lacquered



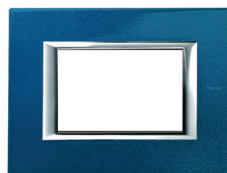
White Lacquered  
WHITE BG



Red Lacquered  
RED RC



Green Lacquered  
GREEN VS



Blue Lacquered  
BLUE BM

### Stone



Slate  
RLV



Carrara Marble  
RMC

### White



White  
HD



# USER INTERFACES

## Bticino Axolute Specialty Keypad Finishes - Elliptical - HB4803USxxx

### Glossy



Shiny Gold  
OR



Silver Matte  
SA



Light Titanium  
TC



Gold Matte  
OS

### Leather



Leather - Sand  
SLC



Leather - Coffee  
SLS

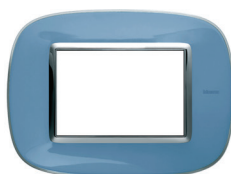
### Liquid



Liquid White  
DB



Liquid Ivory  
DA



Liquid Blue  
DZ



Liquid Orange  
DR



Liquid Green  
DV

### Steel



Stainless Steel  
ACL



Brushed Stainless Steel  
ACS

### Metalized



Aluminum  
XC



Anthracite  
XS



Solid Black  
NR

### White



White  
HD

### Wood



Maple  
LAE



Cherry  
LCA

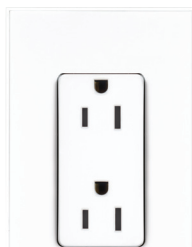


Walnut  
LNC

# USER INTERFACES

## Wiring Devices

\* Available in Arctic White, Vantage Ivory, Black and Titanium standard finishes



### TrimLine II 15A Dual Receptacle

WD-885W-TAW

- ◀ High impact-resistant thermoplastic construction
- ◀ Looping aid feature assists in wire preparation for connection
- ◀ Self-grounding models provide automatic ground clip
- ◀ Matching TrimLine II trim and faceplate included
- ◀ Available in Vantage standard finishes



### TrimLine II 15A Dual Tamper-Resistant Receptacle

WD-885TRW-TAW

- ◀ Meets 2008 National Electrical Code Tamper-Resistant requirements
- ◀ Patented shutter system helps prevent improper insertion of foreign objects and protects children
- ◀ Longer tri-drive screws for easier 12 AWG looping



### TrimLine II 15A GFCI

WD-1595W-TAW

- ◀ Power to outlet is disconnected if critical components are damaged and ground fault protection is lost
- ◀ Prevents line-load reversal miswire, no power to the face or downstream if outlet is wired incorrectly
- ◀ FSUL Listed (Federal Specification WC596)



### TrimLine II 15A Tamper-Resistant GFCI

WD-1595TRW-TAW

- ◀ Patented shutter system helps prevent improper insertion of foreign objects and protects children
- ◀ Protection if critical components are damaged and ground fault protection is lost
- ◀ Prevents line-load reversal miswire, no power to the face or downstream if outlet is wired incorrectly



### TrimLine II 15A Tamper-Resistant Nightlight/GFCI

WD-1595NTLTRWCC4-TAW

- ◀ Patented shutter system helps prevent improper insertion of foreign objects and protects children
- ◀ Protection if critical components are damaged and ground fault protection is lost
- ◀ Sealed nightlight with high impact-resistant lens prevents tampering
- ◀ Energy-efficient LED has average 20-year life expectancy, eliminating bulb replacement

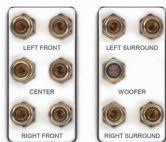


### TrimLine II Illuminated Switch

WD-TM870WSL-TAW

- ◀ Designer-style satin-finish rocker
- ◀ High-impact resistant thermoplastic construction
- ◀ External screw-pressure-plate back

## Connectivity Devices



### 5.1 Home Theater Outlet Straps

CD-F9004-TAW

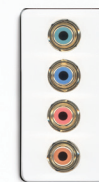
- ◀ Includes a connection for the sub-woofer for a true 5.1 multi-room audio installation
- ◀ Fits into a standard two-gang Decorator opening
- ◀ Matching TrimLine II trim and faceplate included



### Universal Single Speaker Outlet Strap

CD-F9006-TAW

- ◀ Helps eliminate excess speaker wire
- ◀ Fits into any standard Decorator opening
- ◀ Matching TrimLine II trim and faceplate included



### Pre-Configured Strap Component to CAT5e

CD-WP1010-TAW

- ◀ Wall-mounted component video input for HD connections
- ◀ Includes digital audio
- ◀ Matching TrimLine II trim and faceplate included

# USER INTERFACES

\* Contact your Customer Service Representative for additional Wiring and Connectivity Devices

## Connectivity Devices



**HDMI 2-Port Keystone Strap**  
CD-WP1011-TAW

- ◀ In-wall HDMI connection
- ◀ Includes two blank ports for use with any keystone insert



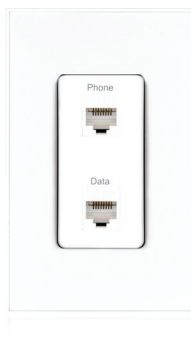
**Cable Access Strap**  
CD-WP1014-TAW

- ◀ Provides a clean out of the box solution
- ◀ Fits into any standard Decorator opening
- ◀ Matching TrimLine II trim and faceplate included



**Pre-Configured 2 Pt Strap  
Phone RJ45 TV F**  
CD-WP3211-TAW

- ◀ Contains both phone and TV connections
- ◀ Fits into any standard Decorator opening
- ◀ UL listed



**Pre-Configured 2 Pt Strap  
Phone/Data 2 RJ45**  
CD-WP3220-TAW

- ◀ Contains both phone and data connections
- ◀ Fits into any standard Decorator opening
- ◀ UL listed



**Pre-Configured 4 Pt Strap  
Phone/Data 2 RJ45 TV/AUX  
2 F**  
CD-WP3422-TAW

- ◀ Provides phone, data, TV and an auxiliary line in one
- ◀ Fits into any standard Decorator opening
- ◀ UL listed



**Decorator Outlet Strap 1-Port**  
CD-WP3411-TAW

- ◀ Snap-in identification icons available
- ◀ Supports Keystone Inserts, with most insert combinations compatible
- ◀ Outlets mount in installation brackets or low voltage mud rings



**Decorator Outlet Strap  
2-Port**  
CD-WP3412-TAW

- ◀ Snap-in identification icons available
- ◀ Supports Keystone Inserts, with most insert combinations compatible
- ◀ Outlets mount in installation brackets or low voltage mud rings



**Decorator Outlet Strap  
3-Port**  
CD-WP3413-TAW

- ◀ Snap-in identification icons available
- ◀ Supports Keystone Inserts, with most insert combinations compatible
- ◀ Outlets mount in installation brackets or low voltage mud rings



**Decorator Outlet Strap  
4-Port**  
CD-WP3414-TAW

- ◀ Snap-in identification icons available
- ◀ Supports Keystone Inserts, with most insert combinations compatible
- ◀ Outlets mount in installation brackets or low voltage mud rings



# USER INTERFACES

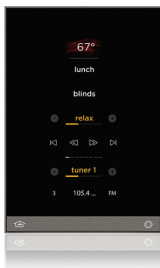
## Remotes



**Small Remote**  
V-SIRC

- ◁ Provides a low cost interface to the Vantage System
- ◁ Compatible with InFusion and Q systems
- ◁ Works in any defined IR zone on the Vantage System
- ◁ Features eight buttons for scene control
- ◁ Four separate buttons for volume and channel buttons

## Touchscreens



**Equinox 4**  
EQUINOX4

- ◁ 4.3" LCD panel
- ◁ Titanium frame, glass to edge surface aesthetic
- ◁ Ambient light sensor for auto Day/Night backlighting and Active IR sensors for approach On & Auto sleep modes
- ◁ Prescribed GUI personalized through Design Center
- ◁ Uses standard US and European wall box mechanics
- ◁ Flick, gesture and touch



**TPT650**  
TPT650

- ◁ Digital 640x480 wide viewing angle 6.5" LCD
- ◁ Provides total design customization through Vantage's Design Center software
- ◁ Powered by InFusion Media
- ◁ 4 input sources for composite video and stereo audio



**TPT1040**  
TPT1040

- ◁ Digital 800x600 wide viewing angle 10.4" LCD
- ◁ Provides 10 percent design customization through Vantage's Design Center software
- ◁ Powered by InFusion Media
- ◁ Four input sources for composite video and stereo audio



**TPT1040 Install Kit**  
TPT1040-INSTALL-16

- ◁ 12VDC 2A Power supply and AC power cord
- ◁ 16" Wall box mount bracket and mounting template
- ◁ 18" Audio/Video cable (RJ45 to RCA male) and cable connector (RJ45 to RJ45)

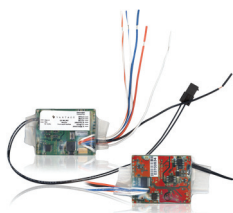


**TPT650 Install Kit**  
TPT650-INSTALL-16

- ◁ 12VDC 2A Power supply and AC power cord
- ◁ 16" Wall box mount bracket and mounting template
- ◁ 18" Audio/Video cable (RJ45 to RCA male) and cable connector (RJ45 to RJ45)

# USER INTERFACES

## HVAC Interface



**Interface Station**  
CC-RLINT and CC-WLINT

- ◁ Integrates thermostats on the Vantage station bus
- ◁ Available in wired and wireless formats



**Vantage Communicating Thermostat**  
CC-STAT

- ◁ Backlit display for easy viewing
- ◁ Works with single-stage, multi-stage and heat pumps
- ◁ Communicates with Vantage touchscreens for remote operation and feedback
- ◁ Automatic set points controlled through the Vantage System



**Vantage Communicating Thermostat Install Kit**  
CC-STAT-RL-KIT and CC-STAT-WL-KIT

- ◁ STAT-WL-KIT Thermostat Install Kit for Centralized System and Distributed Wired System - WireLink Includes CC-STAT and CC-WLINT
- ◁ STAT-RL-KIT Thermostat Install Kit for Distributed Radio System - RadioLink Includes CC-STAT and CC-RLINT



**Sensor-ODT**  
SENSOR-ODT

- ◁ Outdoor temperature sensor
- ◁ Connects to the Vantage Communicating Thermostat (CC-STAT)



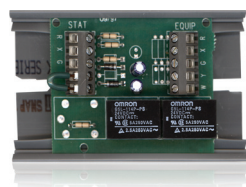
**Sensor-SMT**  
SENSOR-SMT

- ◁ Surface mount remote sensor
- ◁ Connects to the Vantage Communicating Thermostat (CC-STAT)



**Flush Sensor**  
FLUSHSENSOR

- ◁ Flush mount remote sensor
- ◁ Connects to the Vantage Communicating Thermostat (CC-STAT)



**STAT-AUXS**  
STAT-AUXS

- ◁ Used when only four wires are available
- ◁ Connects to the Vantage Communicating Thermostat (CC-STAT)



**CC-Humidity Support Module**  
CC-HUMIDSUP

- ◁ Onboard humidity sensor
- ◁ Add up to two off board sensors for monitor and/or control
- ◁ Humidity/Temperature data is sent by digital communications to CC-STAT
- ◁ Each CC-STAT can support up to four modules

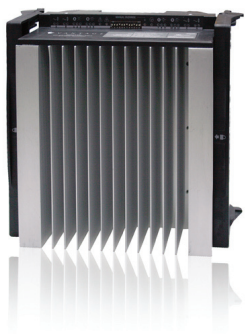


**CC-Temp Support Module**  
CC-TEMPSUP

- ◁ Onboard temperature sensor
- ◁ Add up to two off board sensors for monitor and/or control
- ◁ Temperature data is sent by digital communications to CC-STAT
- ◁ Each CC-STAT can support up to four modules

# LOAD CONTROLS

## Modules



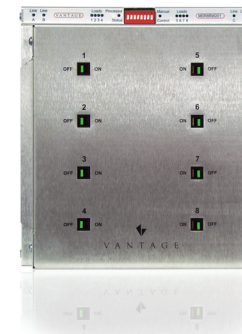
**Standard Dimming Module**  
SDM12-EM

- ◀ Features a plug-and-play design
- ◀ Includes fuses to protect the module
- ◀ Includes two additional spare fuses
- ◀ Eliminates the need for field wiring to the module
- ◀ Step free ramping and dimming
- ◀ Protects against thermal overload



**Electronic Dimming Module**  
EDIMMOD

- ◀ Remains powered and retains the last level for each load if the Main Controller is offline
- ◀ Controls a wide variety of load types:
  - ◀ Incandescent
  - ◀ LED
  - ◀ Reverse phase fluorescent dimming ballasts
  - ◀ Non-dimmable fluorescent (in relay mode only)



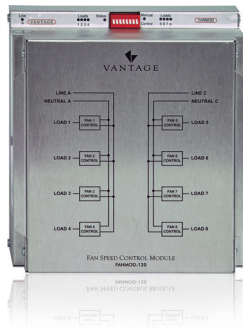
**Latching Relay**  
MDR8RW101 and 201

- ◀ Prevents arcing and extends module life with zero-cross switching technology
- ◀ Plugs into terminal boards located within the enclosure, featuring a plug-and-play design
- ◀ Switches high-voltage loads
- ◀ Offers load by load selectable manual override control



**Eight Line Feed Relay Module**  
MDR8CW301

- ◀ Prevents arcing and extends module life with zero-cross switching technology
- ◀ Plugs into terminal boards located within the enclosure, features plug-and-play design
- ◀ Eliminates the need for field wiring directly to the module
- ◀ Offers load by load selectable manual override controls



**Fan Module**  
FANMOD-120

- ◀ Controls 8 fans
- ◀ Will not add noise to fan
- ◀ Replaces need for fan caps
- ◀ One fan per output



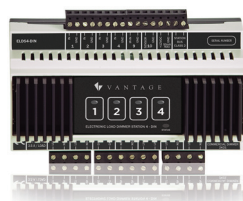
**Universal Load Dimmer Station**  
ULDS1-DIN

- ◀ 4 DIN module width (70mm)
- ◀ Maximum single load up to 1000W @ 240VAC, parallel load capability up to 2000W @ 240VAC
- ◀ Manual ON/OFF override
- ◀ Acts as an independent dimmer or coordinates with the Vantage system to create elegant lighting scenes
- ◀ Dims incandescent, magnetic loads and electronic loads



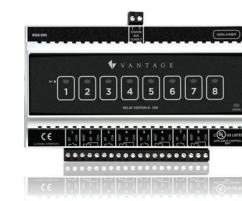
**Standard Dimming Station - DIN**  
SLDS4-DIN

- ◀ Controls the dimming for up to four 480w loads @ 240v or four 240w loads @ 120v
- ◀ Contact inputs for control of additional auxiliary devices
- ◀ Dims incandescent and magnetic loads
- ◀ Clips easily on standard 35 mm DIN rails



**Electronic Dimming Station - DIN**  
ELDS4-1-DIN

- ◀ Controls 4 electronic loads of up to 480 watts @ 240volts or four 240 watt loads @ 120 volts
- ◀ Controls 2 electronic loads of up to 960 watts @ 240v \*\*\*
- ◀ Exclusively for Electronic loads
- ◀ Clips easily on standard 35mm DIN rails



**Relay Station - DIN**  
RS8-DIN

- ◀ Provides a single integration point for up to eight relay channels
- ◀ SPST and SPDT relays allow hardware interlock installations
- ◀ Allows effortless control of devices such as draperies, pumps, garage doors, lifts, screens, pool covers, security systems, and much more
- ◀ Clips easily on standard 35mm DIN rails

# LOAD CONTROLS

## Modules (Continued)



**Fan Capacitor**  
FAN-CAP

- ◀ Provides variable fan speed control when used with Relay Module

## Plug-In Modules



**AccentPoint II Dimmer**  
APDIM and APDIM-GU (Ground Up)

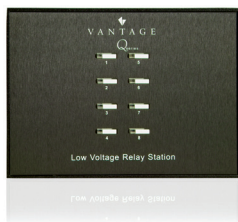
- ◀ Communicates with the Vantage System through RadioLink technology
- ◀ Enables two separate devices to be independently controlled
- ◀ Provides 300 Watts of dimming control per load
- ◀ Two models - ground up or ground down



**AccentPoint II Relay**  
APREL and APREL-GU (Ground Up)

- ◀ Communicates with the Vantage system through RadioLink technology
- ◀ Enables two separate devices to be independently controlled
- ◀ Provides 15 combined Amps of relay control for devices such as motors, pumps, lights, and more
- ◀ Two models - ground up or ground down

## Relay and Output Stations



**Low Voltage Relay Station**  
LVRS

- ◀ Controls devices such as draperies, pumps, lifts, screens and more
- ◀ Returns to last state before a power interrupt
- ◀ Connects directly to the Vantage two-wire station bus
- ◀ Mounts in a standard three-gang box
- ◀ Compatible with 24V bus only



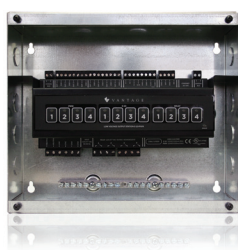
**Low Voltage Relay Station - DIN**  
LVRS8-DIN

- ◀ Provides a single integration point for up to eight low voltage relay channels
- ◀ Allows effortless control of devices such as draperies, pumps, garage doors, lifts, screens, pool covers, security systems, and much more
- ◀ Clips easily on standard 35mm DIN rails



**Relay Station Lighting - DIN**  
RS8-L-DIN

- ◀ All relays are rated for lighting type loads
- ◀ Provides a single integration point for up to eight relay channels
- ◀ Allows effortless control of devices such as lighting loads, draperies, pumps, garage doors, lifts, screens, pool covers, sprinklers, security systems and much more
- ◀ Clips easily on standard 35mm DIN rails



**Standard Low Voltage Output Station**  
LVOS-0-10-PWM

- ◀ Controls up to eight separate sets of LED, CFL or CCFL lighting loads
- ◀ Four analog, 0-10 low voltage outputs
- ◀ Four PWM, low voltage outputs
- ◀ Four high voltage relays (120-277VAC)
- ◀ High voltage relays may be tied to selected low voltage outputs through Design Center
- ◀ Firmware upgradeable in the field



**Low Voltage Output Station**  
LVOS-0-10-PWM-DIN

- ◀ Controls up to eight separate sets of LED, CFL or CCFL lighting loads
- ◀ Offers control of either 0-10 or PWM type loads
- ◀ Allows for addition of dry contact inputs to the automation network including motion sensors, light sensor, IR input, pressure sensors, magnetic switches and more
- ◀ Manual control and LED status for all 12 outputs on front
- ◀ Installs on DIN rail, power by 13.8 to 36VDC



**Low Voltage Output Station**  
LVOS-0-10-PWM-P

- ◀ Controls up to eight separate sets of LED, CFL or CCFL lighting loads
- ◀ Offers control of either 0-10 or PWM type loads
- ◀ Allows for addition of dry contact inputs to the automation network including motion sensors, light sensor, IR input, pressure sensors, magnetic switches and more
- ◀ Manual control and LED status for all 12 outputs on front



# LOAD CONTROLS

NOTE: Faceplates are ordered separately. See pages 39-44.

## WireLink Dimmers



**ScenePoint Dimmer**  
DSxxx

- ◀ Allows control of any room or device with a single button
- ◀ Acts as a stand-alone, self-contained dimmer or as a fully programmable keypad on the Vantage system
- ◀ Accommodates an optional, built-in IR receiver
- ◀ Provides LED button lighting with adjustable brightness levels
- ◀ Available in 1, 2, 3 or 4 gang configurations



**Power ScenePoint Dimmer**  
DPxxx

- ◀ Controls high capacity loads up to 1,200 watts
- ◀ Looks, feels, and responds like a normal keypad station for system uniformity
- ◀ Provides LED button lighting with adjustable brightness levels
- ◀ Requires standard two gang box

## WireLink Relays and Dual Relays



**ScenePoint Relay**  
SRxxx

- ◀ Allows switch control of any room or device with a single button
- ◀ Acts as a stand-alone, self-contained relay or as a fully programmable keypad on the Vantage system
- ◀ Accommodates an optional, built-in IR receiver (EasyTouch II)
- ◀ Provides LED button lighting with adjustable brightness levels
- ◀ Features zero cross arc suppressing switching



**ScenePoint Dual Relay**  
SDRxxx

- ◀ Used for multi-directional motors and provides hardware interlock
- ◀ Controls two separate loads from a single wall box
- ◀ Reduces wall clutter
- ◀ Refer to the User Interface section of the catalog for color options

# LOAD CONTROLS

## RadioLink Dimmers



### RadioLink ScenePoint Dimmer

RDxxx

- ◀ Allows control of any room or device with a single button
- ◀ Acts as a stand-alone, self-contained dimmer or as a fully programmable keypad on the Vantage system
- ◀ Installs easily into existing structures
- ◀ Provides LED button lighting with adjustable brightness levels
- ◀ Available in 1, 2, 3 or 4 gang configurations



### RadioLink Power ScenePoint Dimmer

RPxxx

- ◀ Controls high capacity loads up to 1,200 watts
- ◀ Looks, feels, and responds like a normal keypad station for system uniformity
- ◀ Provides LED button lighting with adjustable brightness levels
- ◀ Requires standard two gang box



### RadioLink 12 Load Kit

KIT-ETIIR-AW

- ◀ Contains all components for complete 12 load installation
  - Controller (IC-24-1)
  - Enclosure and RadioLink Enabler (ISME-24RF-Kit)
  - (12) EasyTouch II 3-Button Arctic White RadioLink Dimmers
- ◀ Contains trims and faceplates
  - TrimLine II Arctic White trims and faceplates



### RadioLink Six Load Expansion Kit

KIT-ETIIREX-AW

- ◀ Contains all components for complete six load expansion
  - (6) EasyTouch II 3-Button Arctic White RadioLink Dimmers
- ◀ Contains trims and faceplates
  - TrimLine II Arctic White trims and faceplates

## RadioLink Relays and Dual Relays



### RadioLink ScenePoint Relay

RRxxx

- ◀ Allows switch control of any room or device with a single button
- ◀ Installs easily into existing structures
- ◀ Provides LED button lighting with adjustable brightness levels
- ◀ Features zero cross arc suppressing switching
- ◀ Uses digital spread spectrum technology, hops between 25 channels to avoid interference and operates at 900 MHz for clear FM



### ScenePoint Dual Relay

RDRxxx

- ◀ Used for multi-directional motors and provides hardware interlock
- ◀ Controls two separate loads from a single wall box
- ◀ Reduces wall clutter

# LOAD CONTROLS

## High Wattage Dimmer Stations



**Standard Dimmer Power Station**  
STPSRW101 and STPSRW201

- ◀ Connects directly to the station bus, a ScenePoint Dimmer, or a dimmer module
- ◀ Handles up to 16 Amps for incandescent loads
- ◀ Expands system capacity without adding modules or enclosures
- ◀ Installs in a deep two-gang box



**Electronic Dimmer Power Station**  
STPERW101 and STPERW201

- ◀ Connects directly to the station bus, a ScenePoint Dimmer, or a dimmer module
- ◀ Handles up to 8 Amps for electronic loads
- ◀ Expands system capacity without adding modules or enclosures
- ◀ Installs in a deep two-gang box

# INTEGRATION MODULES

## Contact Input Stations



**Contact Input Station  
CIS**

- ◀ Provides a single integration point for up to ten contact inputs
- ◀ Allows seamless integration with most passive infrared motion detectors, door contacts, light sensors and more
- ◀ Manual ON/OFF override
- ◀ Acts as an independent dimmer or coordinates with the Vantage system to create elegant lighting scenes
- ◀ Dims incandescent, magnetic loads and electronic loads
- ◀ 24 Volt compatible only



**RadioLink Contact Input Station  
DIN-STIDER121**

- ◀ Provides a single integration point for up to ten contact inputs
- ◀ Allows seamless integration with most passive infrared motion detectors, door contacts, light sensors and more
- ◀ Clips easily on standard 35mm DIN rails
- ◀ Communicates with the controller via RadioLink



**DIN Contact Input Station  
CIS10-DIN**

- ◀ Provides a single integration point for up to ten contact inputs
- ◀ Allows seamless integration with most passive infrared motion detectors, door contacts, light sensors and more
- ◀ Clips easily on standard 35mm DIN rails

## Drapery and Shade Control



**ILT Station  
ILTS**

- ◀ Each interface controls up to two motors
- ◀ Incredibly accurate set point limits
- ◀ Blind position can be indicated with sliders on LCD screens
- ◀ Easy synchronization
- ◀ Somfy® ILT enabled



**InterPoint RTS  
INTERPOINT-RTSS**

- ◀ Seamless communication with a RadioLink enabled controller
- ◀ Communicates with up to 255 RTS addresses
- ◀ Plugs into any 120V AC outlet for easy installation



**ILT Station Setup  
ILTS-SETUP**

- ◀ Each interface controls up to two motors
- ◀ Incredibly accurate set point limits
- ◀ Blind position can be indicated with sliders on LCD screens
- ◀ Easy synchronization
- ◀ Somfy® ILT enabled



# INTEGRATION MODULES

## Port Control Devices



**RS-232 Communication Station**  
Q-RS232S

- ◀ Connects the Vantage system to RS-232 devices such as distributed audio systems, video components, security systems and more
- ◀ Mounts inconspicuously inside an enclosure or behind equipment
- ◀ Installs anywhere an RS-232 port is needed
- ◀ Compatible with InFusion and Q systems



**RadioLink RS-232 Communication Station**  
STC2RR001

- ◀ Connects the Vantage system to RS-232 devices
- ◀ Installs anywhere an RS-232 port is needed for additional RadioLink RS-232 functionality
- ◀ Communicates up to 100 feet via radio transmissions with a RadioLink enabled system
- ◀ Compatible with InFusion and Q systems



**RS-485 Communication Station**  
STC4RW001

- ◀ Connects the Vantage system to RS-485 devices
- ◀ Mounts inconspicuously inside an enclosure or behind equipment
- ◀ Installs anywhere an RS-485 port is needed
- ◀ Uses ASCII or Hexadecimal codes to control and monitor RS-485 equipment



**RadioLink Enabler**  
RFE1000

- ◀ Communicates seamlessly with the Vantage hard-wired system
- ◀ Uses digital spread spectrum technology and hops between 25 channels to avoid interference
- ◀ Operates at 900 MHz for clear FM transmissions
- ◀ Features a 100 foot transmission radius per enabler (over 4 million cubic feet)
- ◀ Runs on the same software used for the wired stations

# ENERGY MANAGEMENT

## Energy Management Solutions



- Energy Management Installation Kit**  
EM-INSTALL and EM-INSTALL-3P
- ◁ Rough-in kit for energy meter
  - ◁ Single phase and 3 phase options available



- Energy Management Meter**  
EM-METER1A KIT and EM-METER5A KIT
- ◁ Delivers real-time usage to Vantage Touchscreens
  - ◁ Utility (revenue) grade meter
  - ◁ Easy to install
  - ◁ User InFusion Accuvim II driver



- Design Center Energy Dashboard Displayed On A TPT1040**
- ◁ Up-to-the minute information on energy consumption
  - ◁ Actionable strategies to reduce carbon footprint
  - ◁ Programmed functions intelligently consider time-of-day, time-of-year, occupancy and other patterns

## Sensors



- PIR Motion Sensor - 15 Foot Diameter**  
EM-MOTION SENSOR15
- ◁ 15 ft (4.6 meter) detection diameter
  - ◁ Ceiling or wall mounted
  - ◁ Paintable trim to match ceiling or wall colors



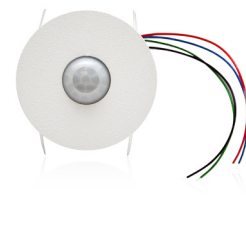
- 360° Motion Sensor**  
FL-MS-MINI-360-33 and FL-MS-MINI-360-16
- ◁ Select sensor based on coverage area
  - ◁ 33 ft (10 meters) or 16 ft (5 meters) detection diameter
  - ◁ Ceiling or wall mounted
  - ◁ Paintable trim to match ceiling or wall colors



- PIR Motion Sensor - 40 Foot Diameter**  
EM-MOTION SENSOR40
- ◁ 40 ft (12.2 meter) detection diameter
  - ◁ Ceiling mounted
  - ◁ Paintable trim to match ceiling color



- Ambient Light Level Sensor**  
EM-LIGHT SENSOR
- ◁ Light level sensor
  - ◁ Ceiling or wall mounted
  - ◁ Paintable trim to match ceiling or wall colors



- 360° Light Motion Sensor**  
FL-LS/MS 360
- ◁ Passive infrared motion detection capability
  - ◁ 360° Detection compact dome lens
  - ◁ Mounts without screws
  - ◁ Available for either ceiling or wall mount
  - ◁ Paintable trim



# ENERGY MANAGEMENT

## Sensors



Garage Door Sensor With Bracket

SENSOR 2-C

- ◁ Provides garage door / open closed input to the Vantage system



Weatherproof Outdoor Light Sensor

Q-REMOTELS WP

- ◁ Light level sensor
- ◁ Sensor housing is weatherproof for outdoor applications



Outdoor Motion Detector

SENSOR1-D

- ◁ Light level sensor
- ◁ Ceiling or wall mounted
- ◁ Paintable trim to match ceiling or wall colors



Magnetic Contact - Wood Door

SENSOR2-A

- ◁ 15 ft (4.6 meter) detection diameter
- ◁ Ceiling or wall mounted
- ◁ Paintable trim to match ceiling or wall colors



Magnetic Contact - Metal Door

SENSOR2-B

- ◁ 20 ft (6.1 meter) detection diameter
- ◁ Ceiling or wall mounted
- ◁ Paintable trim to match ceiling or wall colors

# CONTROLLERS

## InFusion



InFusion Controller  
IC-36-1 and IC-24-1

- ◀ Ethernet enabled
- ◀ Plug-and-play design
- ◀ Up to 120 Low-voltage stations
- ◀ Up to 120 wireless stations
- ◀ Real and astronomical time clocks



InFusion Controller - DIN  
IC-DIN

- ◀ Ethernet enabled
- ◀ Plug-and-play design, external power supply required
- ◀ Up to 120 Low-voltage stations
- ◀ Up to 120 wireless stations
- ◀ Clips easily on standard 35mm DIN rails



# AUDIO and VIDEO

## Video



### 1080HD 1080HD

- ◁ Seamless integration over the Ethernet Bus
- ◁ Transmits a high-definition signal up to 250 meters over single CAT6 cable
- ◁ Supports up to 64 analog zones of HD video and audio, 32 digital zones of HD video and audio



### Audio/Video Receiver RX1 and RX2

- ◁ Receives balanced video, digital audio, and power over a single Cat6 cable
- ◁ Converts digital audio to analog audio when required
- ◁ Auto balancing/gain adjustment, no separate power supply required

## Audio



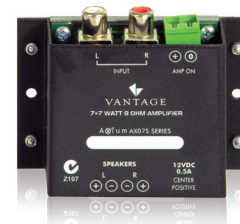
### 850D-DA Multi-Room Amplifier 850D-DA

- ◁ Six power stereo zones @ 50 Watts into 8 ohms, 75 Watts into 4 ohms
- ◁ Two stereo preamplifier zones with full control
- ◁ Expandable to 72 zones of control



### Digital Music Manager DMM4-S and DMM4-ST

- ◁ 1TB hard drive for music storage and backup (2TB option available)
- ◁ Seamless library of all digital music on the network
- ◁ Customized source and playlist for each member of the family
- ◁ MP3 player docked through USB
- ◁ 10,000+ free Internet radio stations



### Vantage 7+7 Watt Amplifier AX-07S

- ◁ Preamplifier outputs for each zone may be set to "independent mode"
- ◁ Output can have independent volume level and mute
- ◁ Extra gain for driving secondary amplifiers with low sensitivity



### Vantage IR Emitter Expander AX-EX4 and AX-IRFX

- ◁ The AX-IRFX is suitable for surface mounting or behind a speaker grill
- ◁ Three Color options: Black, silver & white are provided with each expander
- ◁ Installer may choose to assemble the case with either a rear or side exiting cable
- ◁ The AX0IRFX cable may be terminated using RJ11 connectors

# AUDIO and VIDEO

## Infrared Controls



### TheatrePoint THEPT-A&I

- ◁ Upgradeable firmware from software
- ◁ Integrates third party A/V components into the Vantage system using: IR outputs, IR input ports and IR passthrough
- ◁ RS-232 ports, low voltage relays and contact inputs
- ◁ Current sensing outlets with power conditioning



### Infrared Emitter Station II IRX II

- ◁ Integrates third party A/V components into the Vantage system using:
  - ◁ Four IR Emitters w/ LED indicators
  - ◁ Two RS232
  - ◁ Four Inputs for contacts or sensors
  - ◁ Two IR Inputs
- ◁ Communicates with the system over Station Bus or Ethernet Bus



### Infrared Learner II IR-LEARNER II

- ◁ USB interface
- ◁ USB powered, does not require a battery to transmit
- ◁ Higher learning accuracy
- ◁ Uses latest Vantage IR Protocol
- ◁ Compatible with InFusion only



### Quad Sensor QUAD-SENSOR

- ◁ Provides four products in one by sensing AC current, analog video, digital video and digital audio
- ◁ Connects from IRX II to most third party equipment or from the TheatrePoint or Contact Input Station
- ◁ Gain and delay potentiometers for fine tuning
- ◁ Includes 4.5 foot (1.4m) cable



### Remote Infrared Receiver REMOTEIR

- ◁ Attaches to the auxiliary input on the back of standard Vantage keypad stations as well as IRXII, IRX, or TheatrePoints, Contact Input Stations and DIN Electronic Dimming Stations
- ◁ Adapts to match any room by painting the trim
- ◁ Receives IR transmissions from multiple angles



### IR Emitter Q-EMITTER

- ◁ 282 High-output emitter with no shell surrounding emitter head
- ◁ Allows insertion of emitter inside IRX or IRXII for clean appearance
- ◁ Wire length: 10 feet
- ◁ Compatible with Q systems only



### Powered Opto-Isolated Emitter Cable IR-ISO

- ◁ Provides control of IR receiving devices by a direct, optically isolated connection



### Powered Opto-Isolated Emitter Cable IR-ISO-II

- ◁ Provides control of IR receiving devices by a direct, optically isolated connection



### Infrared Learner IR-LEARNER

- ◁ Learns and saves infrared commands
- ◁ Enables a Vantage system to control infrared activated devices
- ◁ Requires the use of a 9-volt battery
- ◁ Connects to your PC and learns IR codes for use in programming a Vantage system
- ◁ Compatible with TheatrePoint
- ◁ Compatible with InFusion or Q systems

# INFRASTRUCTURE and ENCLOSURES

## InFusion System



### InFusion Main Power Enclosure

IMPE-2 and IMPE-4

- ◀ Houses one Main Controller and up to four modules
- ◀ Features plug-and-play fittings for all modules
- ◀ Installs between standard 16-inch (40.64 cm) o.c. framing or may be surface mounted
- ◀ Low-voltage wiring harness eliminates the need to wire between modules



### InFusion Secondary Power Enclosure

ISPE-2 and ISPE-4

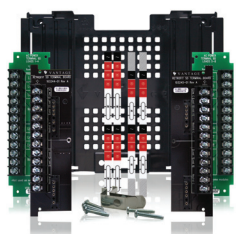
- ◀ Extends the Main Controller's load capacity
- ◀ Features plug-and-play fittings for all modules
- ◀ Installs between standard 16-inch (40.64 cm) o.c. framing or may be surface mounted
- ◀ Custom fitted hinged door for recessed or surface installs
- ◀ Enclosure Terminal Boards available for new and legacy modules



### InFusion Auxiliary Enclosure

IAUX-2 and IAUX-4

- ◀ Houses one to ten LVOS-0-10-PWM modules or other products
- ◀ Allows visual diagnostics of enclosure components through ventilation slots in the cover
- ◀ Installs between standard 16-inch (40.64 cm) o.c. framing or may be surface mounted
- ◀ Custom fitted hinged door for recessed or surface installs



### Terminal Board Kits

TSDM-KIT, TROSDM-KIT and TROSDM-P-KIT

- ◀ Sold and installed separately from enclosures
- ◀ Provides maximum flexibility
- ◀ Available as kits with left and right side boards or individually
- ◀ Used in both Main and Secondary Power Enclosures



### InFusion Surface Mount Enclosure

ISME-36 and ISME-24

- ◀ Available in 24 or 36-volt versions
- ◀ Thumbscrews securely attach InFusion Controller to the enclosure
- ◀ Right angle power cord
- ◀ Convenient access for RadioLink and Ethernet cables



### InFusion Rack Mount Enclosure

IRME-36 and IRME-24

- ◀ Available in 24 or 36-volt versions
- ◀ Thumbscrews securely attach InFusion Controller to the enclosure
- ◀ Right angle power cord
- ◀ Convenient access for RadioLink and Ethernet cables



### Station Bus

VDA-0143

- ◀ Two-wire bus type provides both power and communication
- ◀ Non-polarized wire enables quick and easy installation and termination
- ◀ Simple connection to the back of Vantage keypads and to other Vantage devices

# INFRASTRUCTURE and ENCLOSURES

## ProLAN - Enclosures



**ProLAN 16" Enclosure**  
PL-UX-1648

- ◀ Large capacity rough-in cabinet with 1"x1" Universal Mounting Grid
- ◀ Unique built-in 6 outlet power strip increases internal power supply while saving space
- ◀ (4) PVC headers for superior wire management



**16" Custom Base**  
PL-ProLAN16CB

- ◀ More module bays means greater flexibility for larger homes
- ◀ Standard module bay sizes provide flexibility and scalability of the system
- ◀ Modules are factory installed and tested reducing in-field engineering and failures



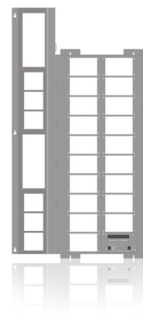
**16" and 24" Acrylic Door**  
PL-UX-410 and PL-UX-490

- ◀ Lockable door can be hinged on either the right or left side
- ◀ Easy on/off door lifts off of hinges without removing any parts
- ◀ Frame includes vents for convection based cooling of cabinet



**ProLAN 24" Enclosure**  
PL-UX-2448

- ◀ Largest capacity rough-in cabinet with 1"x1" Universal Mounting Grid
- ◀ Unique built-in 8 outlet power strip specially designed to handle oversized wall transformers
- ◀ (5) PVC headers for superior wire management



**24" Custom Base**  
PL-ProLAN24CB

- ◀ More module bays means greater flexibility for larger homes
- ◀ Standard module bay sizes provide flexibility and scalability of the system
- ◀ Modules are factory installed and tested reducing in-field engineering and failures



**16" and 24" Solid Aluminum Door**  
PL-UX-400 and PL-UX-480

- ◀ Lockable door can be hinged on either the right or left side
- ◀ Easy on/off door lifts off of hinges without removing any parts
- ◀ Frame includes vents for convection based cooling of cabinet



# INFRASTRUCTURE and ENCLOSURES

## ProLAN - Connectivity Devices and Wallplates



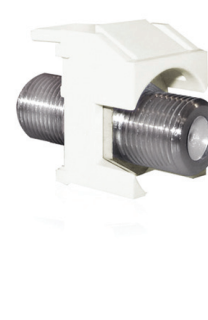
### ProLAN Connectivity Devices and Wall Plates

- ◁ Field or factory configurable
- ◁ Single source ordering solution
- ◁ Available in white, light-almond or black
- ◁ Matching Decorator faceplates also available in matching colors



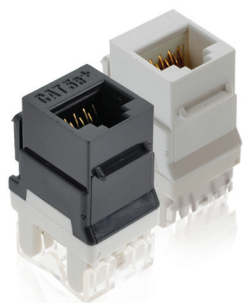
### Decorator Outlet Strap 1, 2, 3 and 4-Port

- WP3411-XX, WP3412-XX, WP3413-XX, PL-WP3414-XX
- ◁ Supports keystone inserts, with most insert combinations compatible
  - ◁ Fits Decorator style faceplates
  - ◁ Outlets mount in On-Q installation brackets or low voltage mud rings



### Standard F-Connector WP3481-XX

- ◁ Extra long for easy connections
- ◁ Recessed hex nut does not allow jack rotation



### Cat5e and Cat6 RJ45 T568 A/B Connector WP3450 (Cat5e) and WP3460 (Cat6)

- ◁ Rear retention caps ensure secure wire termination
- ◁ Vertical design for easy punchdown termination



### 5.1 Theater Outlet Straps F9004-XX

- ◁ Includes a connection for the subwoofer for a true 5.1 multi-room audio installation
- ◁ Fits into a standard two-gang Decorator opening



### Universal Single Speaker Outlet Strap F9006

- ◁ Helps eliminate excess speaker wire
- ◁ Fits in any single gang Decorator opening



### Pre-Configured Two Port Strap Phone/Data RJ45, TV F WP3211-XX and WP3220-XX

- ◁ Contains both phone and TV connections
- ◁ Fits in any Decorator opening
- ◁ UL Listed



### Pre-Configured Four Port Strap Phone/Data RJ45, TV/AUX 2 F WP3422-XX

- ◁ Contains phone, data TV and aux connections
- ◁ Fits in any Decorator opening
- ◁ UL Listed



### Pre-Configured Strap Component to Cat5e WP-1010-XX

- ◁ Wall mounted component video input for HD connections
- ◁ Includes digital audio
- ◁ Fits in any single gang Decorator opening

# INFRASTRUCTURE and ENCLOSURES

## ProLAN - Connectivity Devices and Wallplates



**Pre-Configured HDMI 2 Port Keystone Strap**  
WP-1011-XX

- ◁ In-wall HDMI connection
- ◁ Includes two blank ports for use with any keystone insert
- ◁ Fits in any single gang Decorator opening



**Cable Access Strap**  
WP-1014-WH

- ◁ Pass-through in-wall cable access port
- ◁ Fits in any single gang Decorator opening



**Cat5e and Cat6 Toolless Snap-in Keystone Connector Port**  
WP-3550-XX (Cat5e) and WP-3560-xx (Cat6)

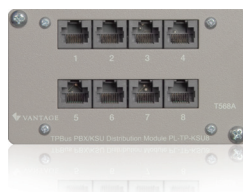
- ◁ No punchdown tool required to terminate cable
- ◁ Terminate up to 20% faster
- ◁ Improves cable performance by maintaining tight wire twists
- ◁ Exceeds TIA 568 standards

## ProLAN - Modules - Telephone Distribution



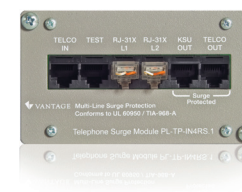
**Telephone Expansion Module**  
PL-TP-TXM10

- ◁ Provides parallel telephone distribution to 10 ports
- ◁ 4 Lines in
- ◁ 10 RJ45 Phone outputs
- ◁ Requires one small bay opening



**8 Port KSU Connection**  
PL-TP-KSU8

- ◁ 8 Discreetly wired RJ45 ports
- ◁ Allows single integration with proprietary phone systems
- ◁ Can replace or be used in conjunction with 10 port analog telephone hubs
- ◁ Requires one KSU extension cable
- ◁ Requires one small bay opening



**Telephone Input Module with Surge Suppression**  
PL-TP-IN4RS.1

- ◁ Choice of line 1 or line 2 RJ31X seizure jacks
- ◁ Independent surge protection for each phone line
- ◁ Conforms to UL 60950/TIA-968-A specifications
- ◁ Requires one small bay opening



**KSU 8 Extension Cable For Panasonic Phone Systems**  
PL-TP-KSU624

- ◁ 8 RJ14 modular connections to TP-KSU8 50 pin header
- ◁ Designed for Panasonic KXT-624 and first 8 extensions on KXT-824
- ◁ Universal rear connection for KSU's

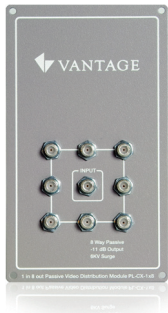


**KSU 8 Extension Cable For Panasonic Model 1232**  
PL-TP-KSU1232

- ◁ RJ21X 25 pair telecom connection to TP-KSU8 50 pin header
- ◁ Designed for Panasonic KXT-1232D and remaining extension on KXT-816
- ◁ Universal rear connection for KSU's

# INFRASTRUCTURE and ENCLOSURES

## ProLAN - Modules - Video Distribution



**8 Port Passive CATV Distributor**  
PL-CX-1x8

- ◁ Suitable for CATV or antenna
- ◁ Meets Time Warner standards
- ◁ 12 Volt DC power
- ◁ 8 Passive TV outputs
- ◁ Requires 1 large amplifier bay opening



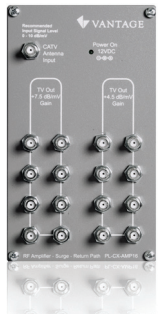
**8 Port Amplified CATV Distributor**  
PL-CX-AMP8

- ◁ Compatible with DTV, HDTV, cable modem
- ◁ Suitable for CATV or antenna
- ◁ Surge protection
- ◁ 8 TV outputs (Kit- 8 TV outputs, 11 internal inputs)
- ◁ 1 GHz Broadband
- ◁ 6.5 kV surge protection



**8 Port Amplified CATV Distributor Kit**  
PL-CX-AMP8.2KIT

- ◁ Compatible with DTV, HDTV, cable modem
- ◁ Suitable for CATV or antenna
- ◁ Surge protection
- ◁ 8 TV outputs, 11 internal inputs
- ◁ 1 GHz Broadband
- ◁ 6.5 kV surge protection



**16 Port Amplified CATV Distributor**  
PL-CX-AMP16

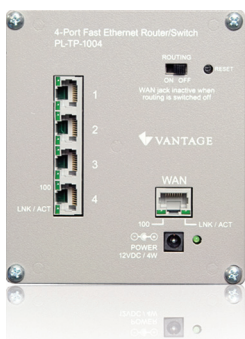
- ◁ Compatible with DTV, HDTV, cable modem
- ◁ 8 TV outputs low gain for short runs, 8 TV outputs high gain for long runs
- ◁ 4 Internal inputs
- ◁ Low noise amplification <5dB
- ◁ 6.5 kV surge protection



**16 Port Amplified CATV Distributor Kit**  
PL-CX-AMP16KIT

- ◁ Compatible with DTV, HDTV, cable modem
- ◁ 8 TV outputs low gain for short runs, 8 TV outputs high gain for long runs
- ◁ 18 internal inputs
- ◁ Low noise amplification <5dB
- ◁ 6.5 kV surge protection

## ProLAN - Modules - Data Distribution



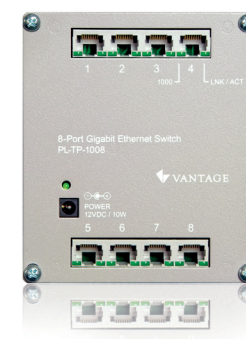
**4 Port 10/100 Ethernet Switch/Router**  
PL-TP-1004

- ◁ 4 Ports 10/100Mbps Ethernet switch
- ◁ Built-in network router with firewall to protect computers from malicious attacks
- ◁ Full MDI/MDI-X auto detection on every port so adding equipment does not require special cabling
- ◁ Simple switch to disable router when used with customer's existing router
- ◁ Built-in NAT router



**5 Port 10/100 Switched Ethernet**  
PL-TP1005

- ◁ Expands data ports
- ◁ Auto sensing/auto switching all ports
- ◁ Auto negotiation/auto MDI
- ◁ Daisy chain connections to additional 10/100 BT5's

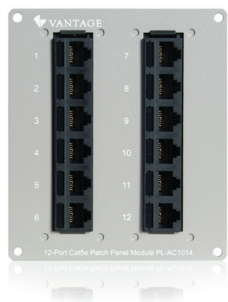


**8 Port Gigabit Ethernet Switch**  
PL-TP1008

- ◁ 8 Ports each supporting 10, 100 or 1,000 megabit speeds
- ◁ Provides the fastest gigabit speeds to current workstations while simultaneously supporting legacy networking equipment
- ◁ Full MDI/MDI-X auto detection on every port so adding equipment does not require special cabling

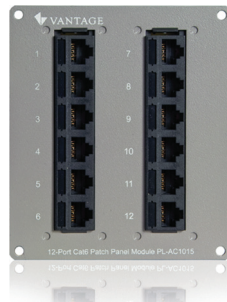
# INFRASTRUCTURE and ENCLOSURES

## ProLAN - Modules - Data Distribution - Continued



High Density Mini Patch Panel (Cat5e)  
PL-TP-AC1014

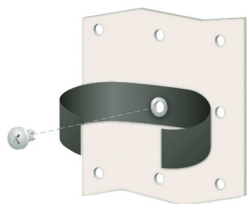
- ◀ Cat5e
- ◀ Color code: EIA/TIA 568A
- ◀ RJ45 ports labeled 1 - 12



High Density Mini Patch Panel (Cat6)  
PL-TP-AC1015

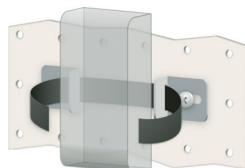
- ◀ Cat6
- ◀ Color code: EIA/TIA 568A
- ◀ RJ45 ports labeled 1 - 12

## ProLAN - Modules - Universal Integration Grid Mounting and Adjustable Holster Kits

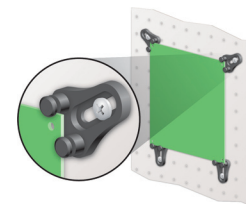


Wire Management Kit  
PL-4057

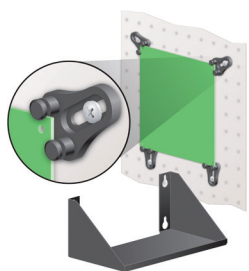
- ◀ Includes 3 - 9" grommeted Velcro straps
- ◀ 1 - 18" Velcro strap, 4 screws



Universal Integration Mounting Kit  
PL-70K2000



Security/Home Automation Circuit Board Mounting Kit  
PL-70K3030



Security/Home Automation Circuit Board Mounting Kit With Battery Tray  
PL-70K4800



2005 Apple Mac Mini Mounting Brackets  
PL-70K9800



# INFRASTRUCTURE and ENCLOSURES

## ProLAN - Modules - Power Distribution



Power Distribution Module  
PL-DC-PDM10

- ◁ Distributes regulated 18 VDC (9 TAPs) and 24VDC (1 TAP)
- ◁ Comes with all ProLAN frame assemblies
- ◁ Requires one small bay opening



54B5500 4 AMP Power  
Supply and 70K5400  
Bracket Kit  
PL-70K5455



10" DC Power Cord  
PL-DCCORD-10  
32" DC Power Cord  
PL-DCCORD-32



13" DC Power Cord  
PL-DCCORD-13  
16" DC Power Cord For  
PL-CXAMP16  
PL-DCCORD-16AR

## ProLAN - Large Bay Module Blank



Large Bay Module Blank  
PL-CXBLANK-S

# SOFTWARE



## Design Center™

- ◊ Simple programming of complex scenes, modes and equipment commands
- ◊ Keypad design, style and setup
- ◊ Conditional logic programming
- ◊ Integrated driver library with drag and drop objects for complete automation
- ◊ Professional grade templates, widgets and graphics available for touchscreen design
- ◊ Project reports, diagnostic and troubleshooting tools



## Driver Tools

- ◊ Driver Tools is used by Vantage software engineers to build, test and certify complex drivers
- ◊ Create TCP/IP, RS-232 and IR drivers
- ◊ Available for download through the dealer website
- ◊ Simple to moderate bi-directional drivers can be created by dealers



## Drivers

- ◊ Available for download through Design Center for project use
- ◊ Key manufacturers and devices supported
- ◊ RS232, IP and IR drivers available
- ◊ Categories include:
  - Distributed audio
  - Media room/theater equipment
  - Security systems
  - Media servers
  - HVAC systems
  - Shade controls
  - Pools and spas



## iPhone® App

- ◊ Available on the iTunes App® store
- ◊ Professionally designed interface for multiple home management
- ◊ Control lights through keypads, individual lighting pages or tasks
- ◊ Browse music sources and Vantage DMM music collections by album artist, song and playlist as well as internet radio stations
- ◊ View IP surveillance cameras
- ◊ Set and view thermostats for comfort control



## iPad® App

- ◊ Available on the iTunes App store - with one iTunes account purchase, sync multiple Apple devices per project on the account
- ◊ Professional looking GUI for multiple home management
- ◊ Control lights through keypads, individual lighting pages or tasks
- ◊ Browse music sources and Vantage DMM music collections by album artist, song and playlist as well as internet radio stations
- ◊ View IP surveillance cameras and set and view thermostats for comfort control



## WebPoint Lite™ WPL

- ◊ Control and monitor multiple homes and/or offices from anywhere with one mobile device
- ◊ iPhone®, iPod touch®, iPad®, BlackBerry®, Android™ and Window™ Mobile devices supported
- ◊ Manage lights, shades, music, security systems, whole-house scenes and more
- ◊ Multiple users with individualized log-ins and scenes supported
- ◊ Connects over wifi or 3G network
- ◊ Sets up in minutes



## InFusion Media Client™

- ◊ Software powering Vantage in-wall touchscreens now available for Windows OS tablets and PCs
- Step 1 USB Key plugs into tablet or PC to enable GUI
- Step 2 Download accompanying software from Vantage dealer site, install on Windows OS tablet
- Step 3 Create custom interfaces in Design Center's Touchscreen Designer
- Step 4 Export the design to the Windows OS device



## InFusion Media Server

- ◊ Software for turning any PC into a digital jukebox source for multi-room audio systems
- ◊ Download and install from Vantage dealer website
- ◊ Works with iTunes®, Windows Media Player®, Windows XP Media Center®
- ◊ Compatible with Windows XP, Vista® and 7 OS (32 bit and 64 bit)



## Energy Management Dashboard

- EM-METERIA KIT, EM-INSTALL and EM-CT200A
- ◊ Up-to-the minute information on energy consumption
  - ◊ Actionable strategies to reduce carbon footprint
  - ◊ Programmed functions intelligently consider time-of-day, time-of-year and occupancy

# RF LIGHTING CONTROL - USER INTERFACES and LOAD CONTROLS

## RFLC Keypads



**Wireless RF In-Wall Devices**  
DRDx

- ◁ Wireless (RF) lighting control
- ◁ New construction, remodel
- ◁ Scalable to 100 loads
- ◁ InFusion integration
- ◁ No control wiring necessary



**RF Incandescent Dimmer**  
DRD2-x

- ◁ No neutral required (Incandescent dimmer only)
- ◁ Proprietary RF communication protocol; 900MHz Radio, bi-directional
- ◁ Stores room and house scenes
- ◁ 60 - 600 Watt rating, 120V



**RF Switch**  
DRD3-x

- ◁ Proprietary RF communication protocol; 900MHz Radio, bi-directional
- ◁ Stores room and house scenes
- ◁ 0 - 800 Watt rating, 120V



**RF Universal Dimmer**  
DRD4-x

- ◁ Proprietary RF communication protocol; 900MHz Radio, bi-directional
- ◁ Stores room and house scenes
- ◁ Compatible with most load types
- ◁ 25 - 600 Watt rating, 120V



**RF Multi-Location Station**  
DRD8-x

- ◁ Use for 3-way, 4-way, multi-way control with grouped devices
- ◁ Proprietary RF communication protocol; 900 MHz bi-directional radio



**RF Fan Speed Station**  
DRD9-x

- ◁ Proprietary RF communication protocol; 900 MHz bi-directional radio
- ◁ Fan Controllers provide recall of previously preset speed
- ◁ Patented overload and short-circuit protection



**RF Plug-in Lamp Station**  
MRP6-W

- ◁ Plugs into any grounded, 120V outlet
- ◁ Proprietary RF communication protocol; 900MHz Radio, bi-directional
- ◁ Lamp module is compatible with any dimmable lighting load up to 300W



**RF Plug-in Appliance Station**  
MRP7-W

- ◁ Plugs into any grounded, 120V outlet
- ◁ Proprietary RF communication protocol; 900MHz Radio, bi-directional
- ◁ Appliance module is compatible with non-dimmable lighting loads and any appliance up to 800W



**Keyfob Remote**  
MKFOB

- ◁ RF communication
- ◁ Recalls scene information stored in the dimmers and switches
- ◁ Room Scene Remote Seek feature provides individual control of all the loads in the room
- ◁ House Scene Remote Panic feature enables whole house response such as flashing lights
- ◁ Keyfob control of room or house scenes

# RF LIGHTING CONTROL - KITS

## RFLC Keypad Finishes



Arctic White  
DPPx-W



Vantage Ivory  
DPPx-A



Black  
DPPx-B



### RFLC 12 Load Kit KIT-RFLC-AW and KIT-RFLC-IV (not shown)

- Contains all components for complete 12 load installation
  - Controller (IC-24-1)
  - Enclosure and RadioLink Enabler (ISME-24RF-Kit)
  - (2) EasyTouch II 5-Button Arctic White RadioLink Dimmers
  - (10) Universal Dimmers (DRD4-w)
  - RFLC Enabler (MR232)

Not available in black



### RFLC 10 Load Expansion Kit KIT-RFLCEX-AW and KIT-RFLCEX-IV (not shown)

- Contains all components for complete ten load expansion
  - (10) Universal Dimmers (DRD4-w)

Not available in black







Living Perfection  V A N T A G E



A Group brand | **legrand**

[www.vantagecontrols.com](http://www.vantagecontrols.com)

Living Perfection  V A N T A G E

1061 South 800 East  
Orem, Utah 84097  
800.555.9891  
801.229.2800  
801.224.0355 fax

Vantage EMEA nv/sa  
Binnendijk 40  
B-9130 Beveren  
Belgium  
+32 3 773 31 06